

Presentations2Go v6 installation manual

Table of Contents

1	Prerequisites	3
2	Warning.....	5
3	Install process	6
3.1	Licensing.....	9
3.2	Assets Folder	12
3.3	Apache	17
3.4	Database	20
3.5	Catalogue	24
3.6	Catalogue Service.....	30
3.7	Schedule Service	33
3.8	Encoder Service.....	36
3.9	Transcoder Service.....	39
3.10	Recorder Service	42
3.11	Finalize	45
4	Migration process steps.....	46
5	Manual post installation steps.....	46
5.1	Set IIS bindings.....	46
5.2	Manage private key access	47

1 Prerequisites

- Windows 2012R2 or later (Windows 2016 or 2019 advised)
- Direct attached storage or shared (SMB) storage.
- For load balanced setup, shared storage is required.
- SQL Server 2012R2 or later. SQL Server 2016 or later advised.
- When in load balanced setup, the SQL server needs to be shared
- In single server (small) setup local SQLExpress setup is supported too.
- 3 DNS registered IP addresses (preferably bound to a single network adapter).
 1. 1 for IIS (Catalogue)
 2. 1 for Encoderservice
 3. 1 for Apache (streaming)

Suggested DNS naming:

- Server.org.domain => for IIS/Catalogue
- Server-e.org.domain => for Encoderservice protocol (uses port 443 TCP but is not SSL traffic)
- Server-a.org.domain => for Dash/HLS streaming

2 SSL certificates:

1. 1 for IIS (Catalogue)
2. 1 for Apache (streaming)

May be a single certificate with 2 dns names)

Load balancer setup:

1. IIS
 - a. Normal HTTP/HTTPS traffic. Health check eg on HEAD
2. Encoderservice
 - a. TCP traffic on port 443. Not HTTP traffic. Health check based on **TCP connect only** on port 443.
 - i. Because publish actions from controller to server can be large files and this concerns none HTTP traffic, maybe you need to enable support for non HTTP traffic to prevent timeouts that close the connection to soon.
3. Apache
 - a. HTTPS traffic. Health check on port 443 with HEAD and status code 403

Especially when a load balancer setup is used (but we advise to always do this), the DNS lookup of the hosts names might not result in the IP addresses of the actual server.

So you need to define the (External) DNS names in the Host file of every server in the load balanced farm.

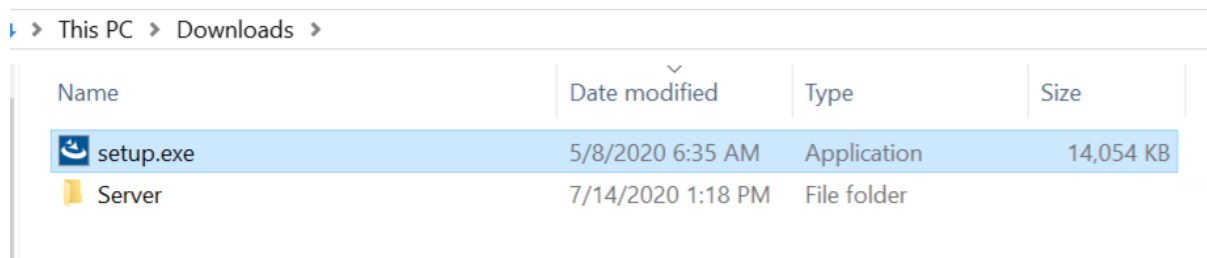
These DNS names should point to the local IP addresses of the server.



The Presentations2Go applications bind to a DNS names and that should point to the local IP address.

Eg:

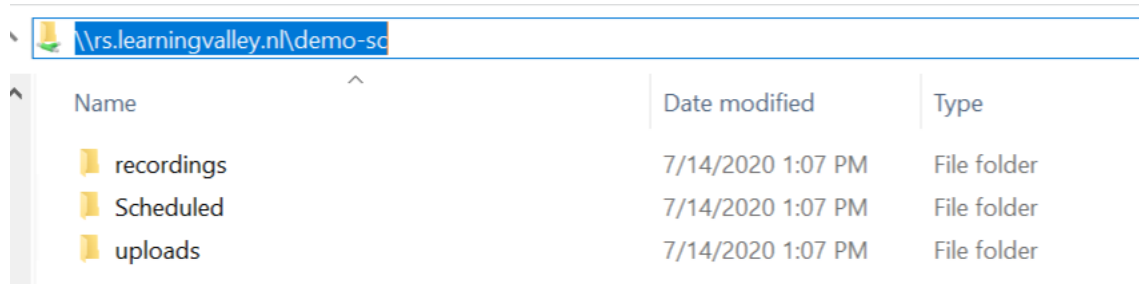
```
# localhost name resolution is handled within DNS itself.  
#       127.0.0.1       localhost  
#       ::1             localhost  
10.128.7.25    demo-sc.presentations2go.eu  
10.128.7.2     demo-sc-e.presentations2go.eu  
10.128.7.7     demo-sc-a.presentations2go.eu
```




After downloading the installation zip file, extract it and run setup.exe from the root folder.



Name	Date modified	Type	Size
 setup.exe	5/8/2020 6:35 AM	Application	14,054 KB
 Server	7/14/2020 1:18 PM	File folder	

We assume that when migrating to a shared folder, that the assets have already been moved/copied to this new location. Only Recordings, Uploads and Scheduled folders need to be moved.



Name	Date modified	Type
 recordings	7/14/2020 1:07 PM	File folder
 Scheduled	7/14/2020 1:07 PM	File folder
 uploads	7/14/2020 1:07 PM	File folder

2 Warning

Migration to version 6 is a one-way migration. There is no (easy) way back. Be sure to test thoroughly before migrating your production environment to v6.

When you upgrade to version 6, migration of database and data is preformed after the installation has finished.

The following steps are being performed during this migration

- InitializeServerTaskTable
- PopulateWebServerNameRecordingsEventLog
- MigrateAssets
- BackupRecordingsEventLog

The progress of the migration is show in the catalogue main window (top orange bar) and is only visible to administrators.

It is logged in the Logs folder.

In the fist step the database is reorganized. This process normally takes only a few minutes.

The second step will take longer time depending on the size of the recordingeventlog table but often also only takes about a few minutes.

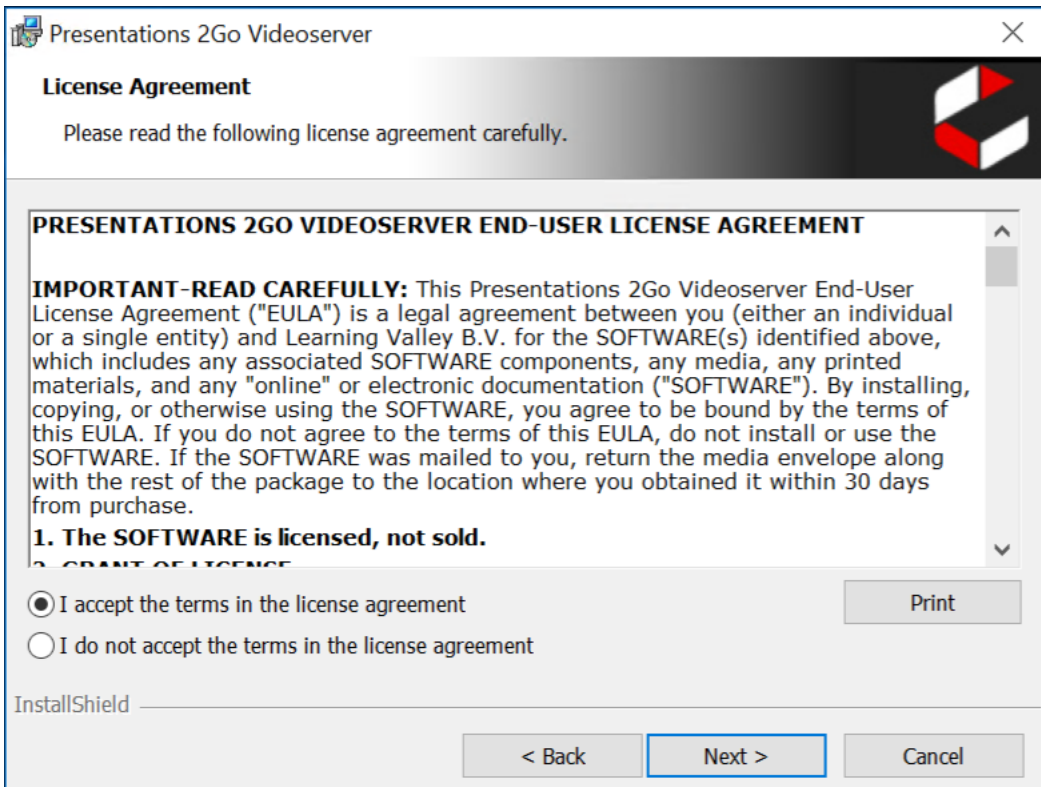
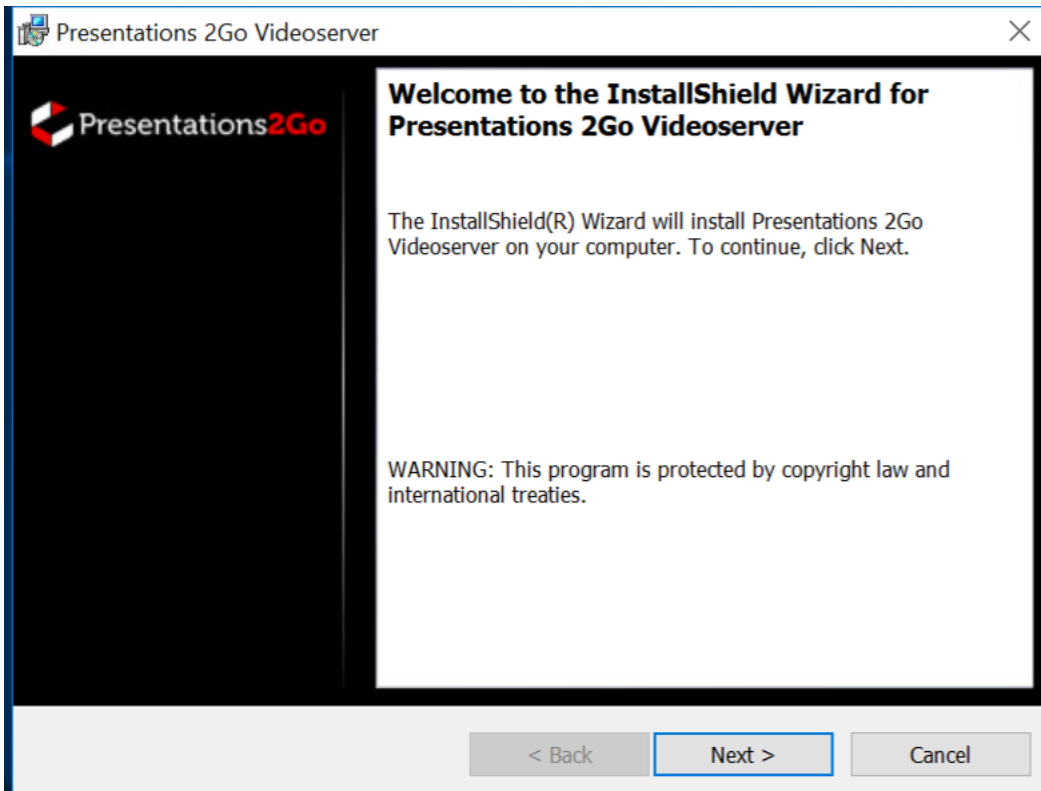
The 3rd step can take long time. All assets (metadata) on disk need to be modified and this process will take at least the same time as required by the nightly reflection process. So this can take up to a few days on large installations. The process does cause some disk load but should not influence performance very much

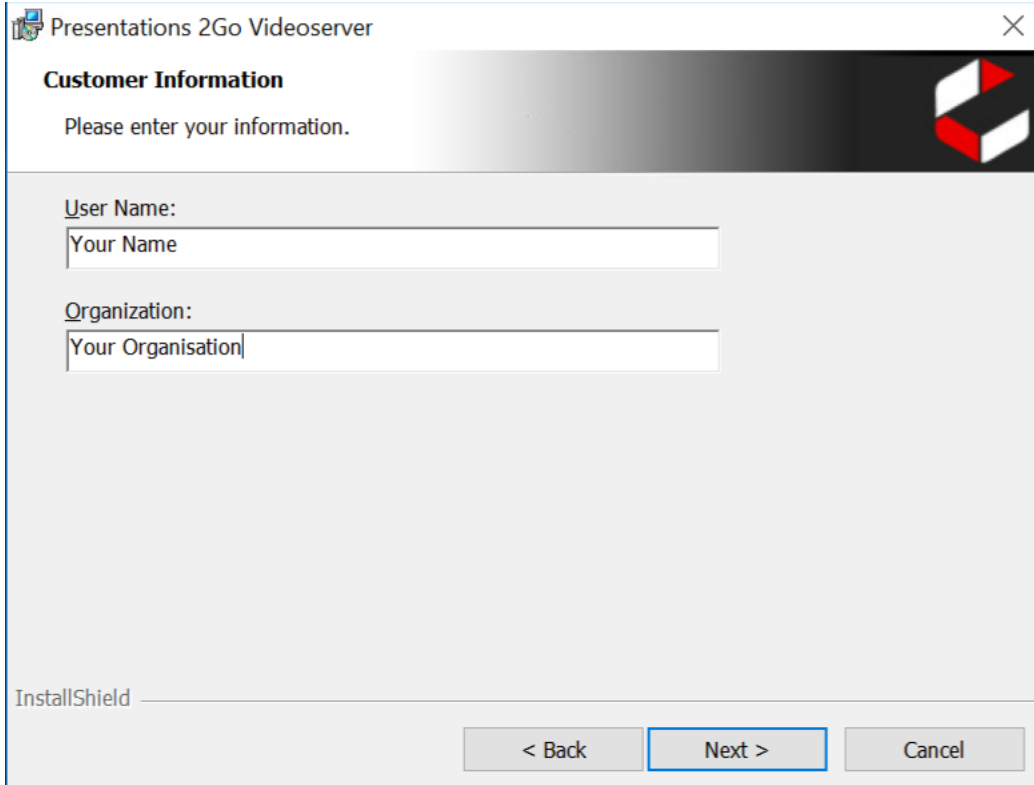
The 4rd step will cleanup the recordingseventlog table from old statistics logging. This process is stressing on the database and can take long time. At the end of the process the old log data will be written to csv files in logs\statistics folder.

In general it is advised to do the upgrade in a period (eg weekend) where only a limited number of users will be accessing the service.

3 Install process

After downloading the installation zip file, extract it and run setup.exe from the root folder.





The screenshot shows a Windows-style dialog box titled "Presentations 2Go Videoserver". The dialog has a dark header bar with the text "Customer Information" and a sub-instruction "Please enter your information." on the left, and a logo on the right. Below the header, there are two text input fields: "User Name:" with the placeholder text "Your Name" and "Organization:" with the placeholder text "Your Organisation". At the bottom of the dialog, there are three buttons: "< Back", "Next >" (which is highlighted with a blue border), and "Cancel". The "InstallShield" logo is visible in the bottom-left corner of the dialog area.

The installer will do a prerequisites check on the server to check if the required software is installed.






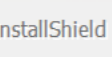
If not, you can install those prerequisites from the installer.

Only for small installations, SQLServer Express can be installed from the installer. Normally the SQL server will be a standalone server and you will connect to it.

Presentations 2Go Videoserver

Presentations 2Go Prerequisite

Prerequisite Information

	.Net Framework 4.5: Installed. Version: 4.7.03062 Required for all feature.	<input checked="" type="checkbox"/>
	IIS: Installed. Version: IIS 10.0 Required for feature: P2G Catalogue, P2G Assets Folder.	<input checked="" type="checkbox"/>
	ASP .Net: Installed. Version: v4.0.30319 Required for feature: P2G Catalogue.	<input checked="" type="checkbox"/>
	SQL Server: Installed. Version: 11.3.6020.0 Required for feature: P2G Database.	<input checked="" type="checkbox"/>
	SQL Server 2012 Native Client: Installed, version 2011.110.6518.0 Required for feature: P2G Database.	<input checked="" type="checkbox"/>
	SQL Server OLEDB Client: Installed, version 18.2.1.0 Required for feature: P2G Transcoder.	<input checked="" type="checkbox"/>

InstallShield

< Back Check **Next >** Cancel

Presentations 2Go Videoserver

Ready to Install the Program

The wizard is ready to begin installation.

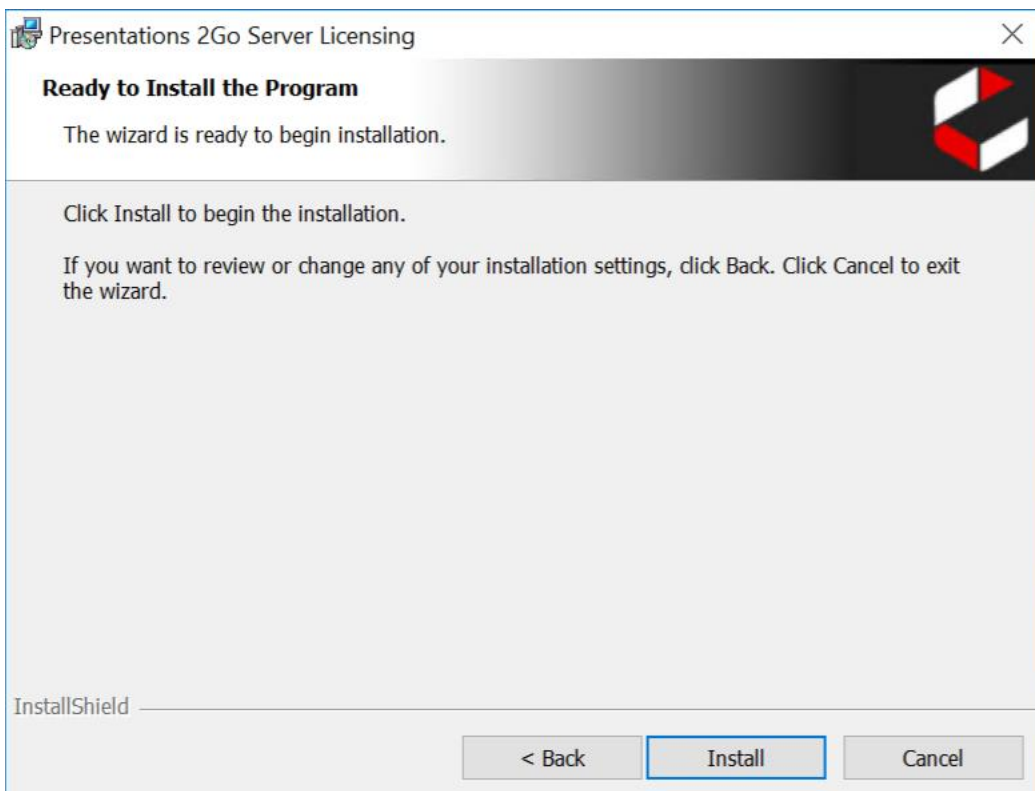
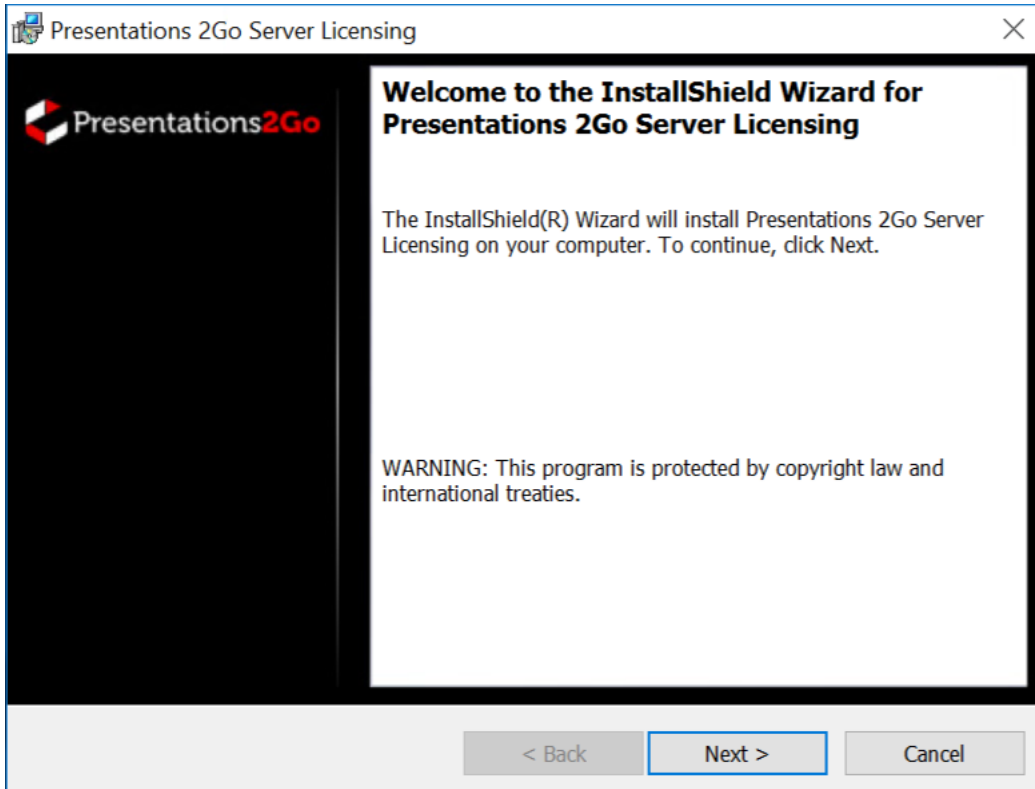
Click Install to begin the installation.

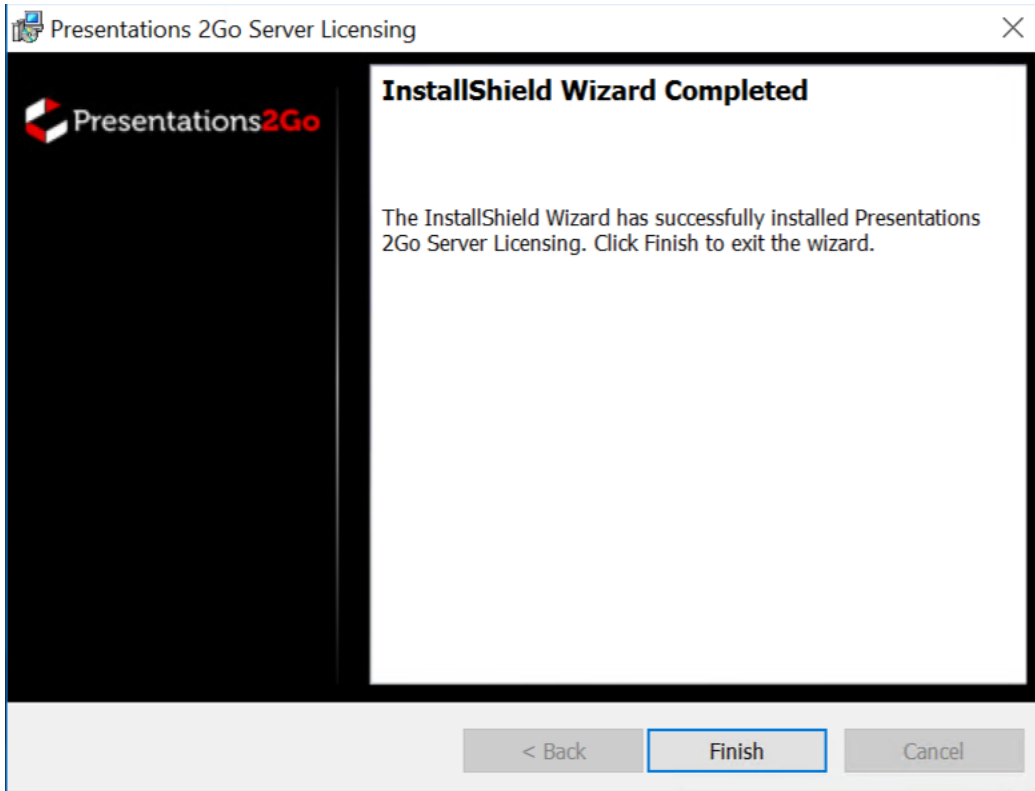
If you want to review or change any of your installation settings, click Back. Click Cancel to exit the wizard.

InstallShield

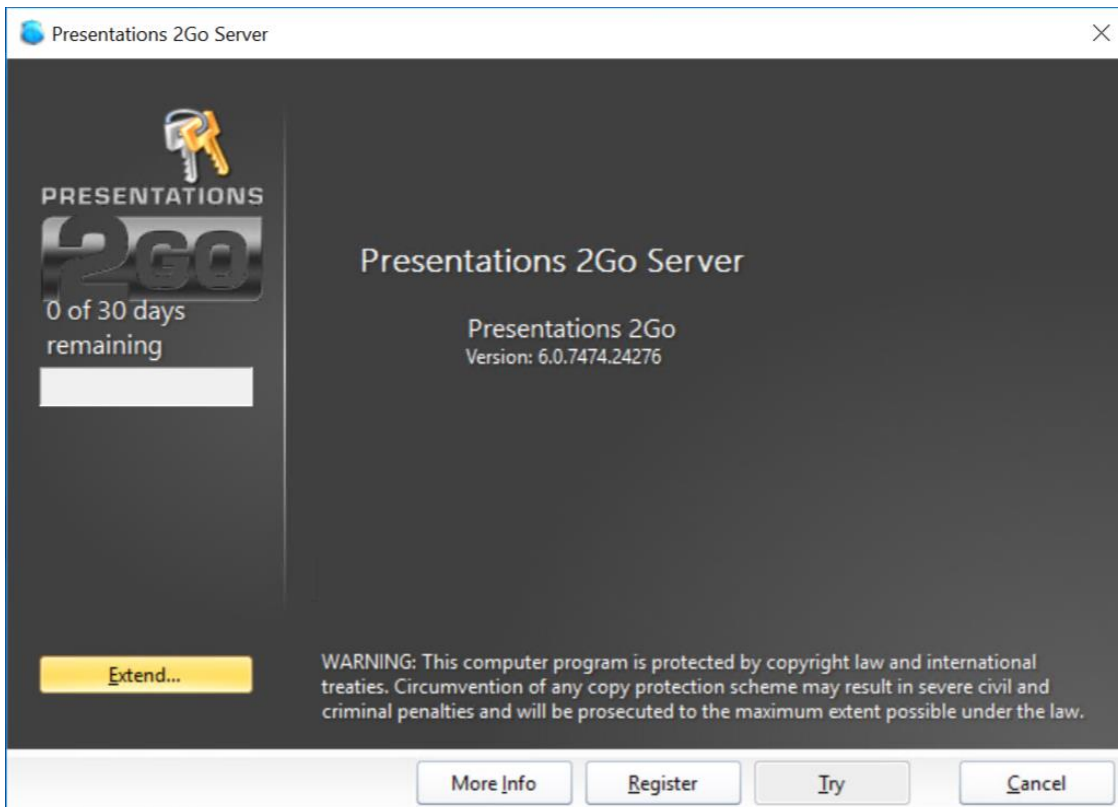
< Back **Install** Cancel

3.1 Licensing






During installation of the license, you will be prompted to supply your Presentations2Go Server Serial number. If you are doing an in place upgrade, the original serial will be copied to clipboard and pasted to the dialog below automatically.



Presentations 2Go Server



Register Presentations 2Go Server

To continue you must register your copy of Presentations 2Go Server.

Name ●

Organization

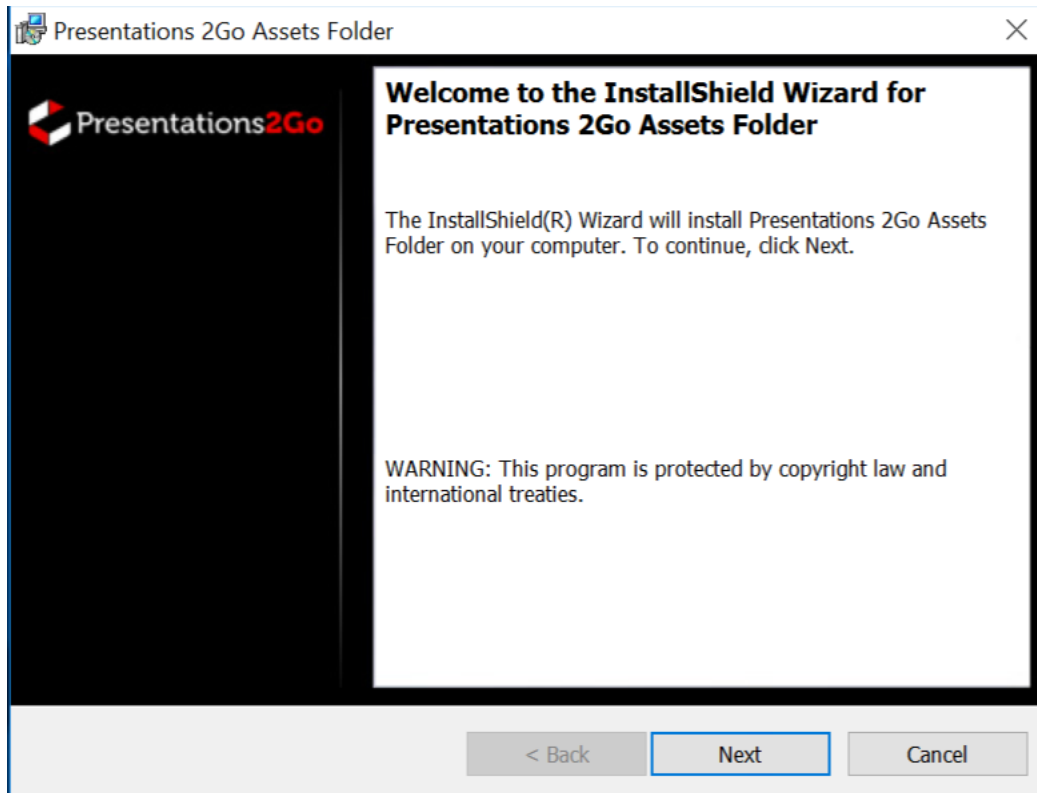
Serial Number ●

Activate automatically when I am online.

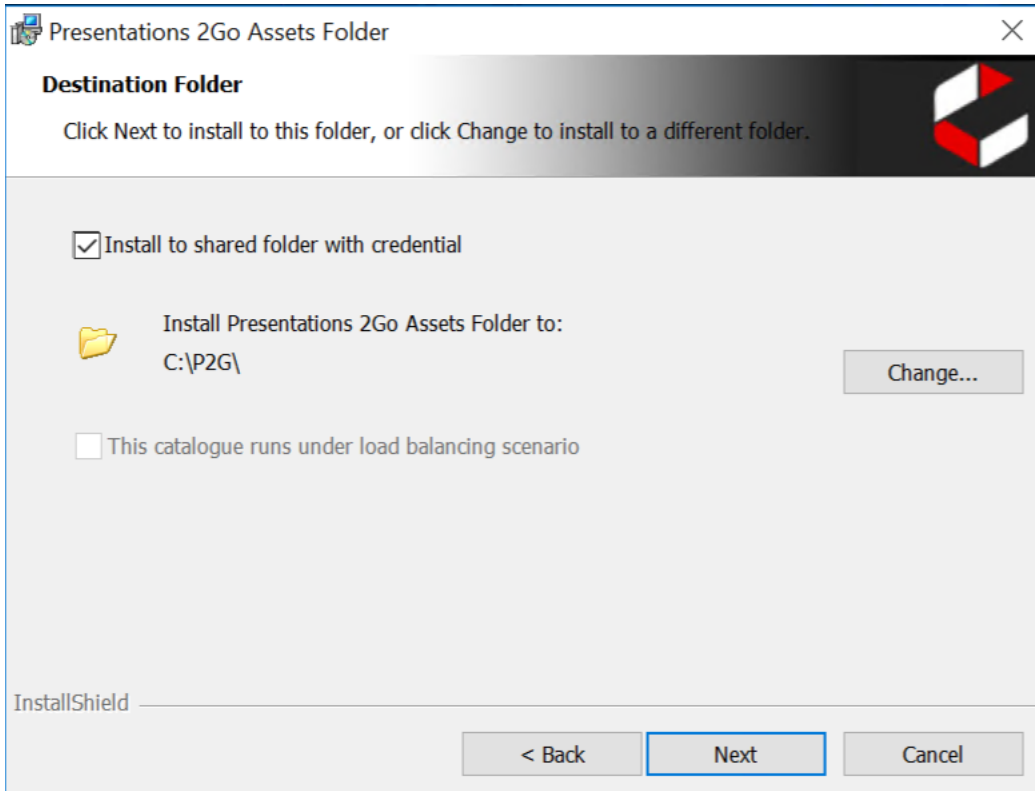
[Register](#) [Try](#)

3.2 Assets Folder

The next step is the Assets folder installer.

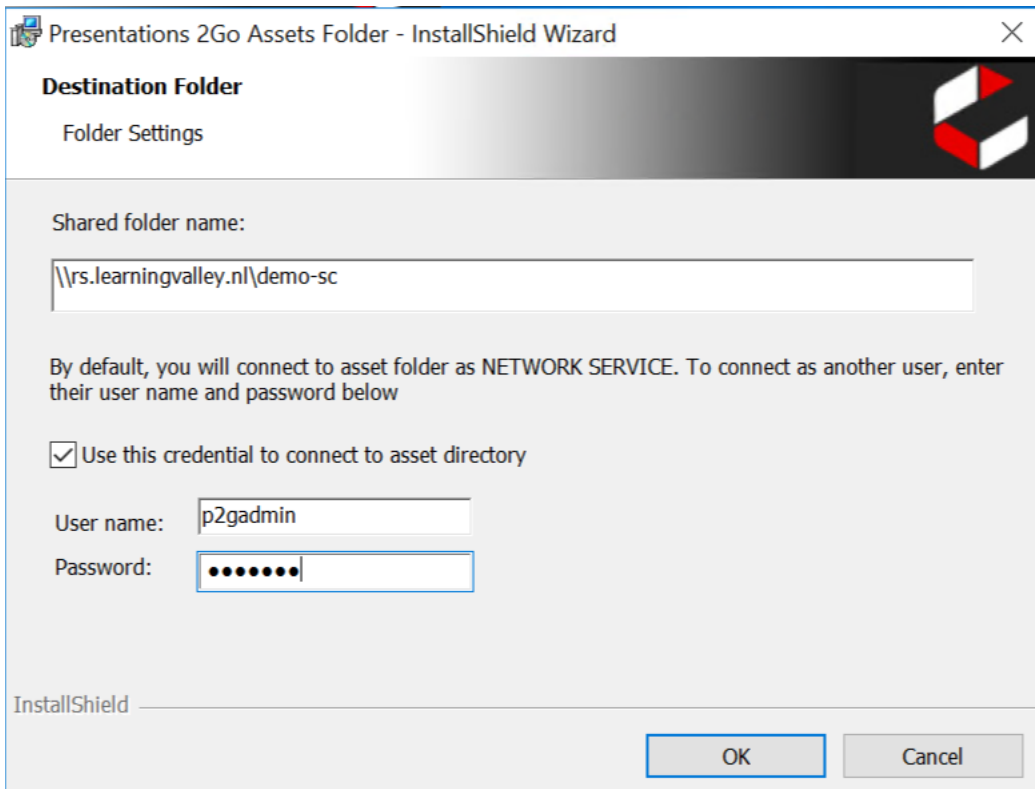


Supply the location of your existing assets (upgrade scenario) or the new location in case of fresh install.



When you want to use a load balanced scenario, you need to use shared storage.

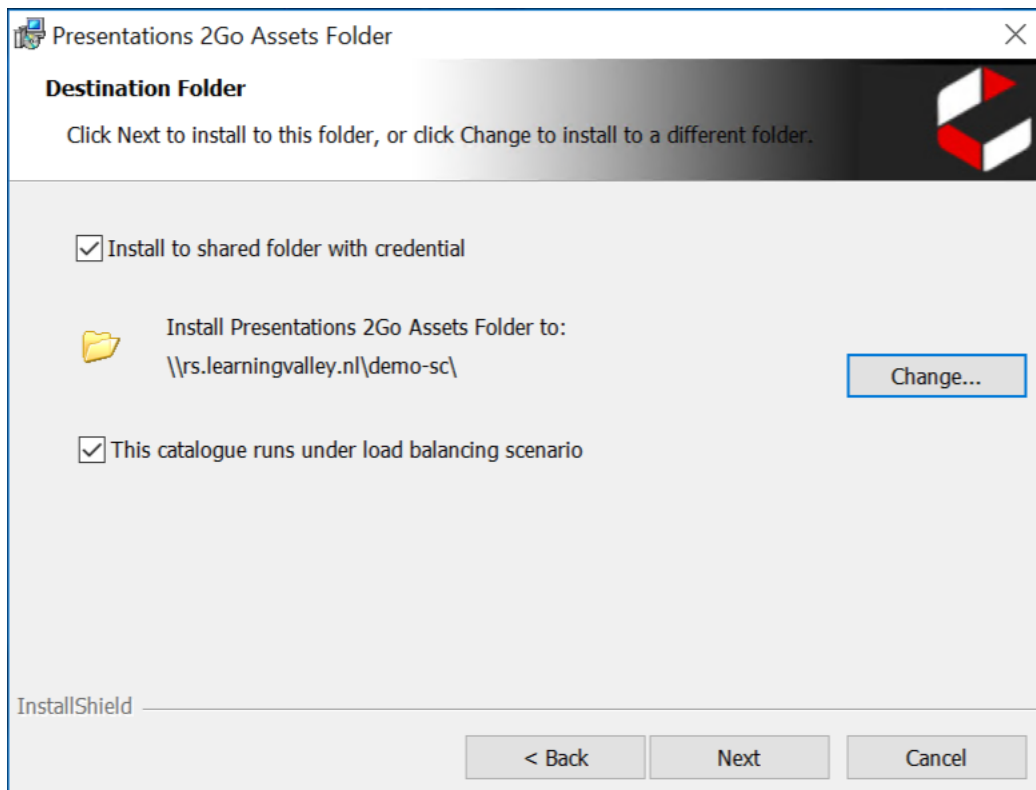
When you want to use shared storage without load balancing, the setup will assume load balancing setup anyway to make later addition of extra servers simpler.



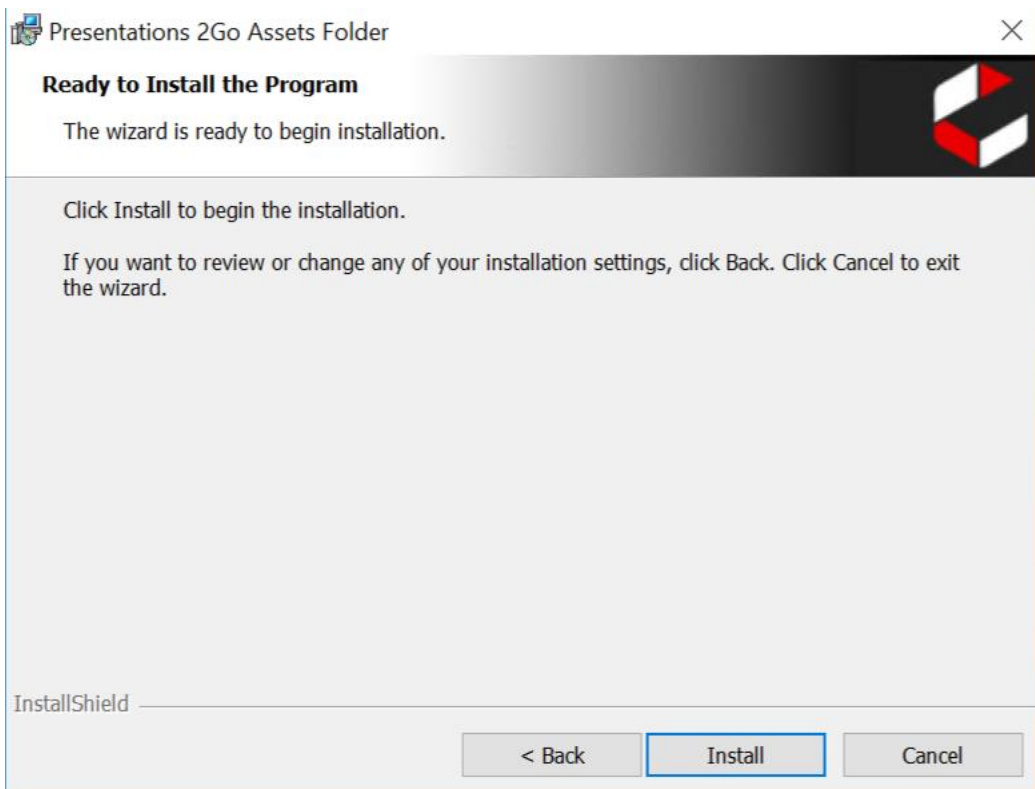
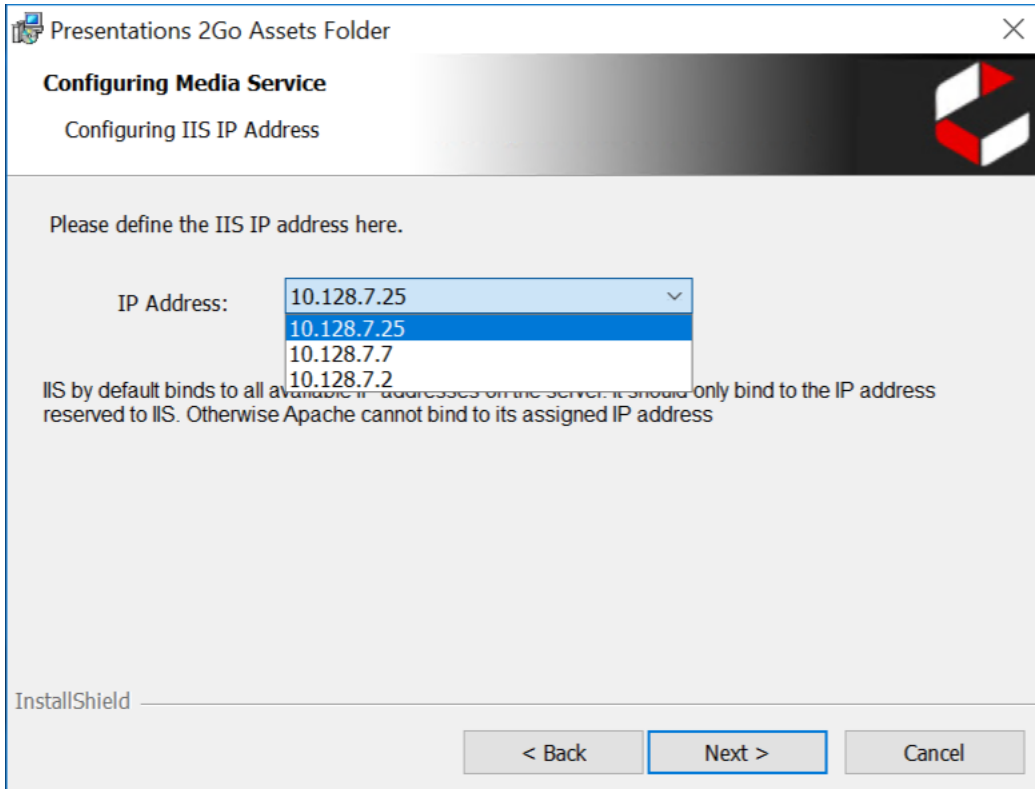
When choosing the location of the shared folder, you will need to supply credentials to access that share. Be sure to use a 'service account' that has a none expiring password.

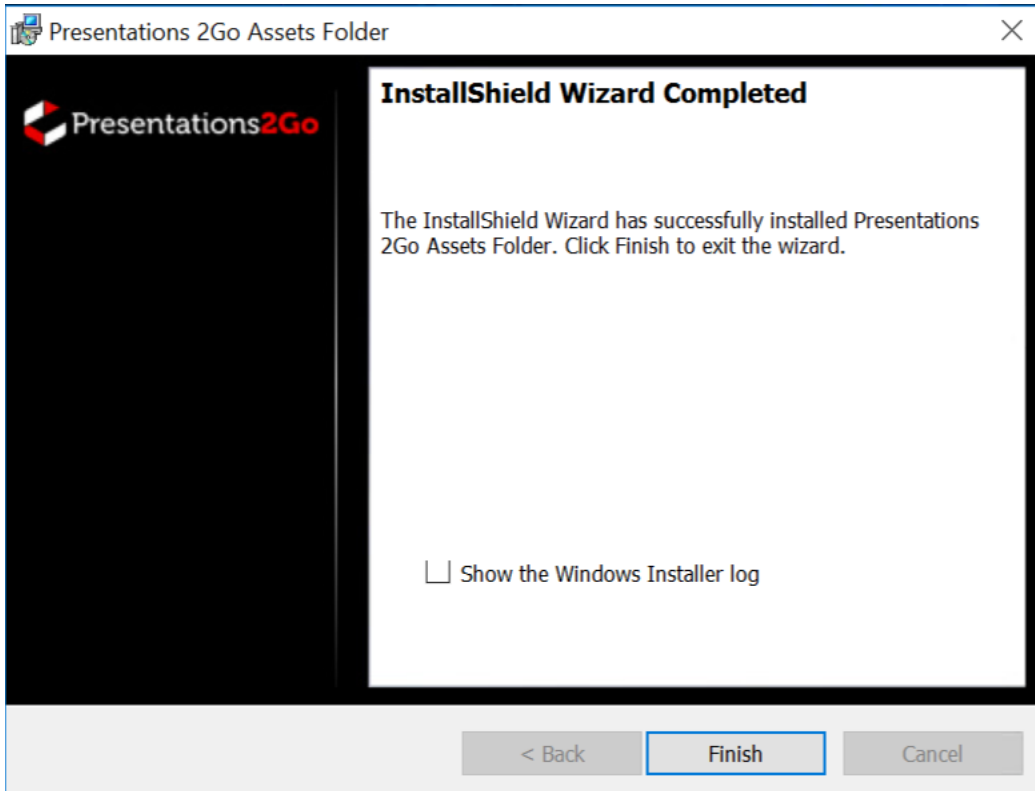
Presentations2Go server applications run under the Network Service account. Apache and the P2G* Services depend on the P2GCatalogueservice service. This service needs to start first since it takes care of mapping the shared storage. Once one service running under Network Service account has done this mapping, all services running under Network Service account, will have access to the share.

This means the IIS application pool needs to run under the Network Service account too but the installer will take care of that.



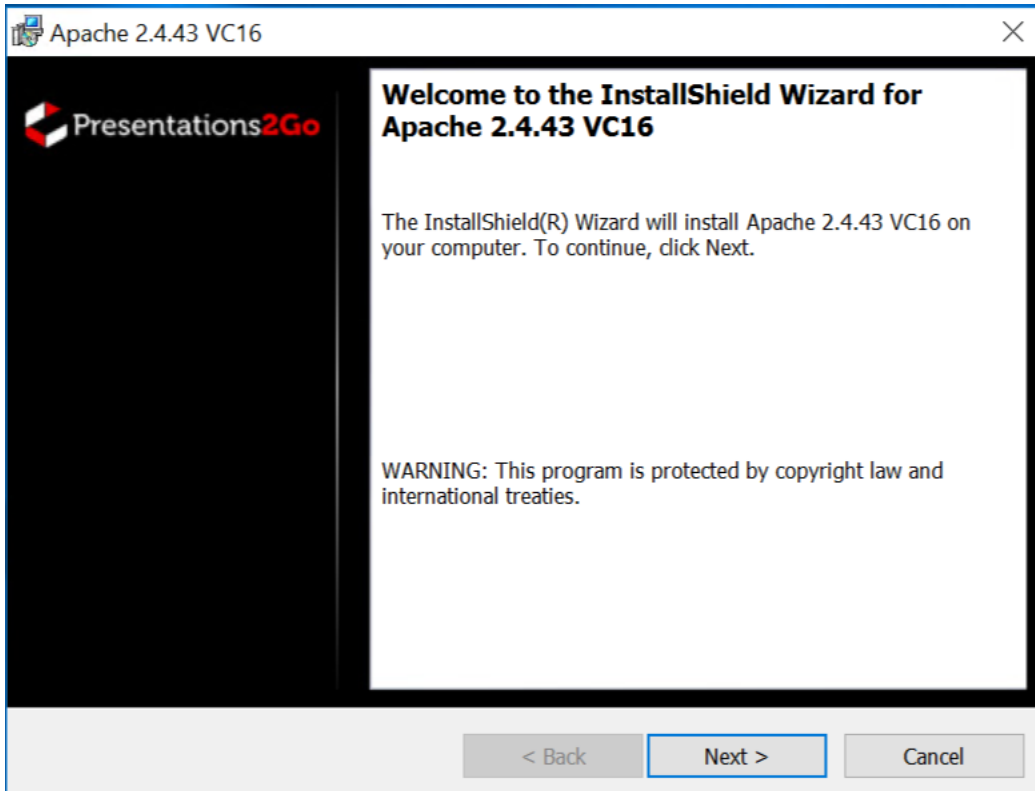
Next step is that you need to select the IP address that IIS will use. Under water this will execute a **netsh http iplisten add <ip address>** command to make sure IIS does not hijack all IP addresses.



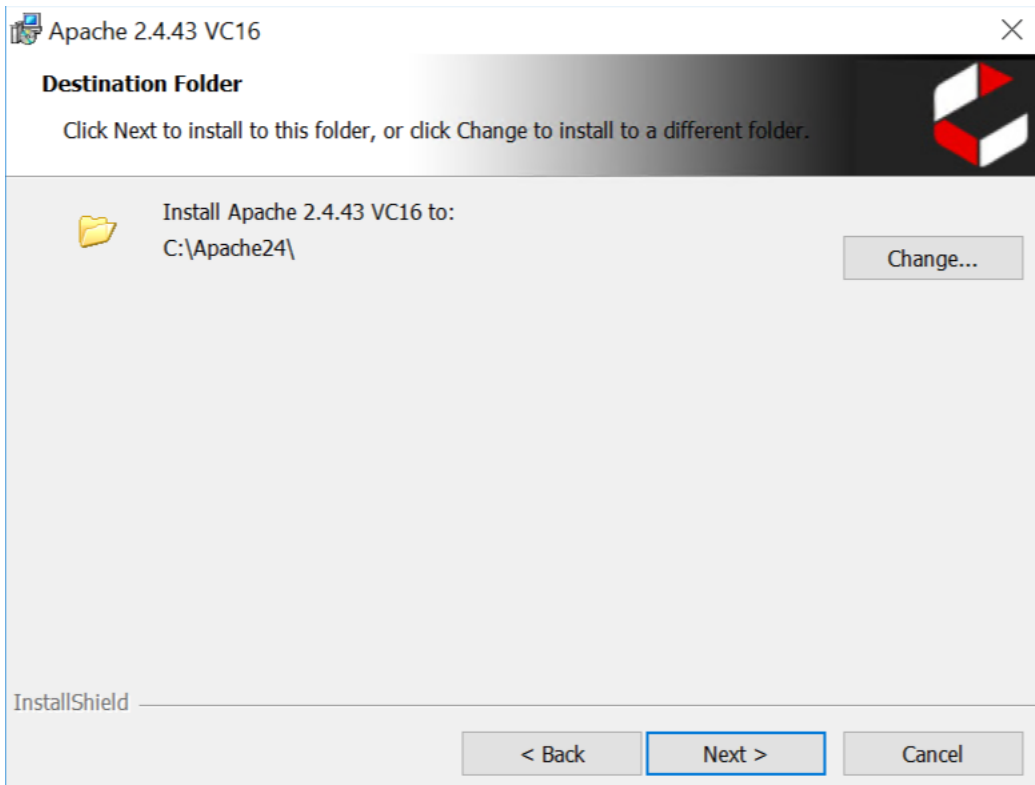


3.3 Apache

The next step is the installation of Apache

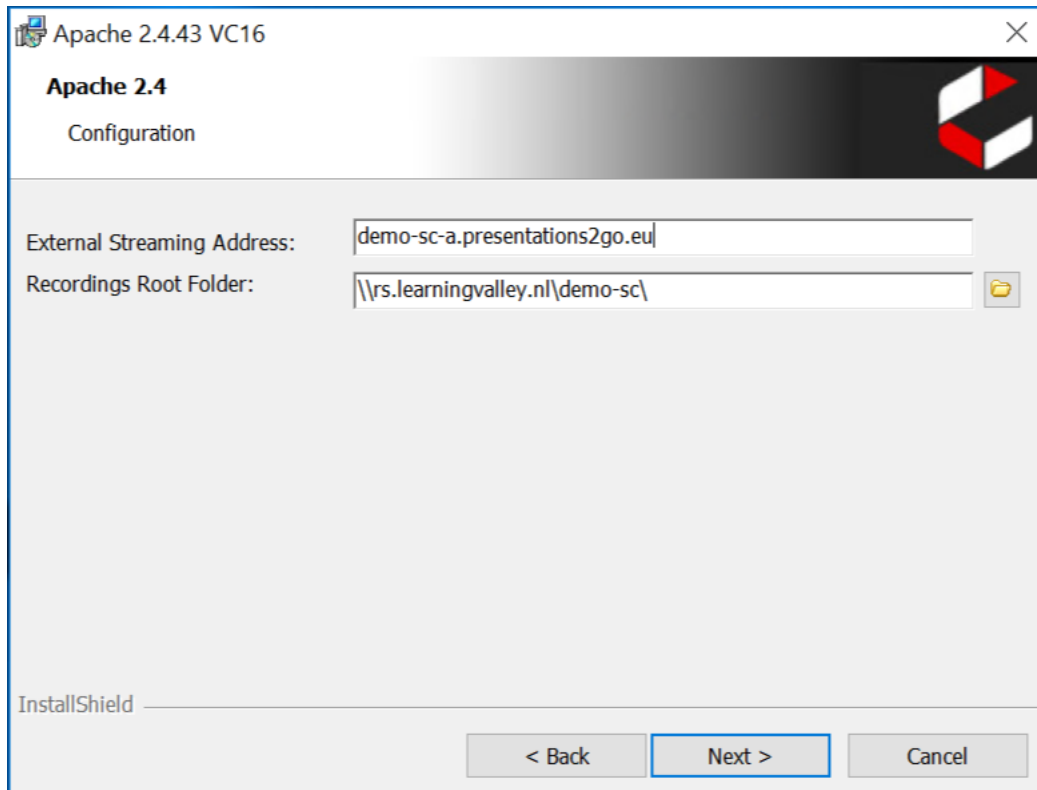


Apache installs in c:\apache24 folder.

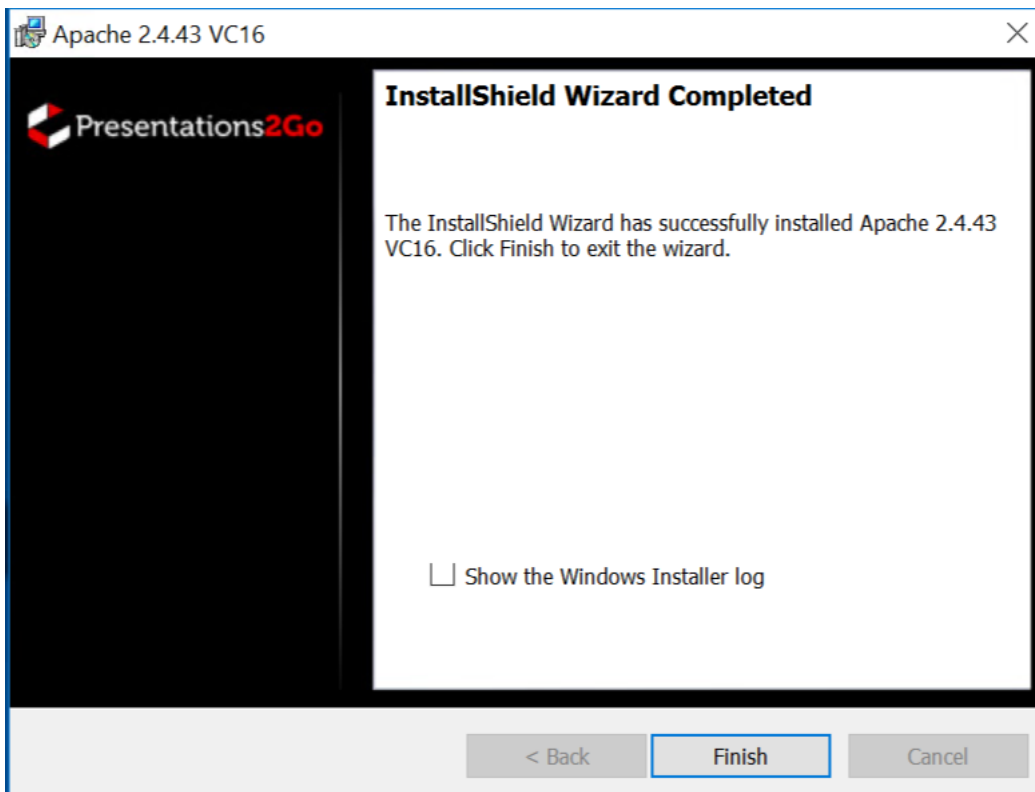
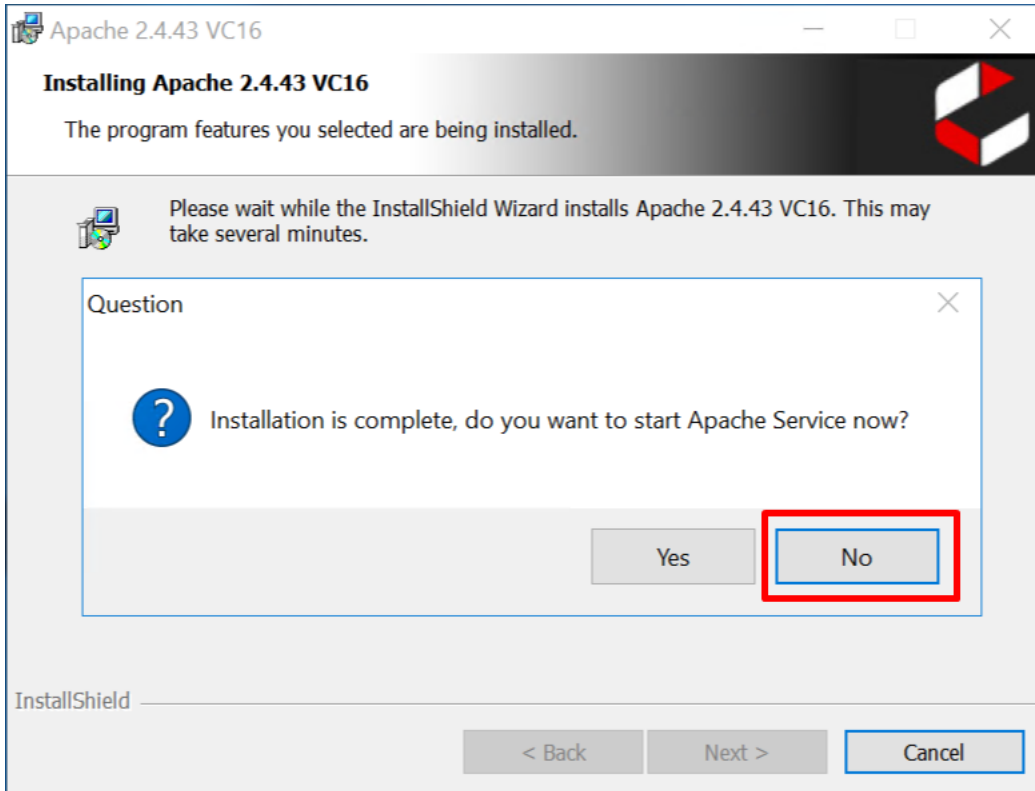


Apache needs the IPlisten address so supply the DNS name for apache/streaming.

Further it needs the location where the assets will be stored.



When the installation finishes, do not yet start the Service. This will be done after installation has finished and the server is rebooted.

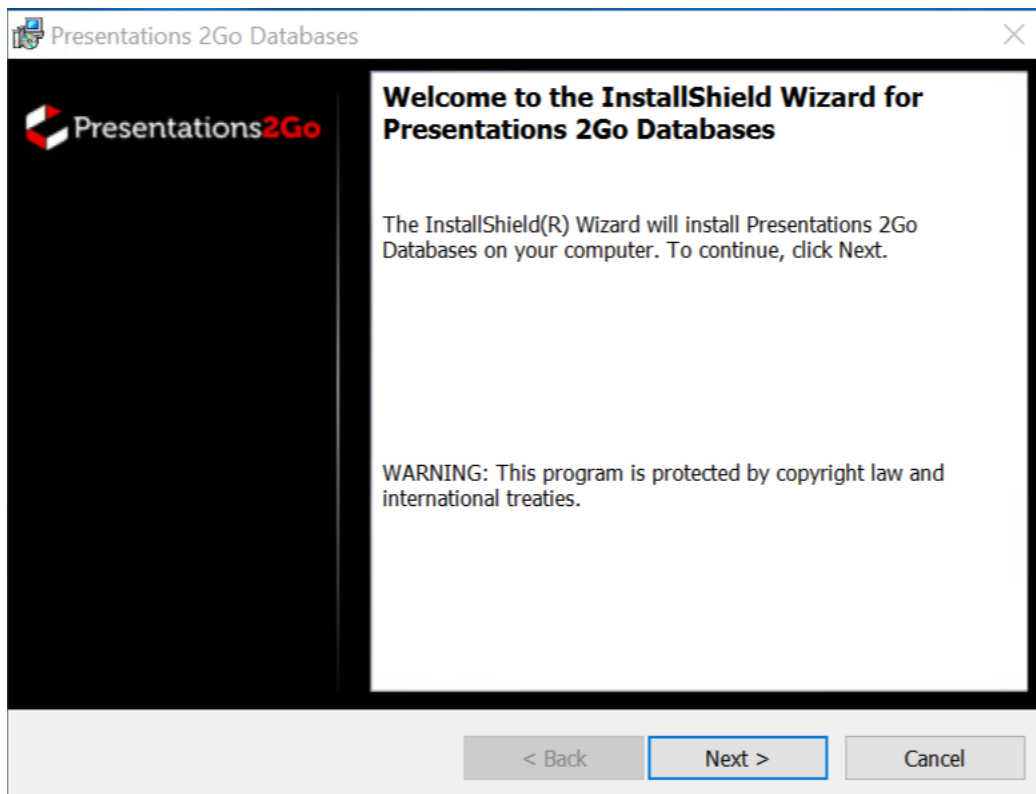


3.4 Database

The next step is to create the Database.

When using a local SQLExpress database, you can do this from the installer. When using a remote SQL server, first create an empty Database on the SQL server and assign an account who is DN Owner (dbo). Since the Presentations2Go services run under the Network Service account, integrated authentication for remote SQL server access is not supported.

In case you are upgrading, just point to the database you already have. The database schema upgrade will automatically be performed during the installation. You can run this process as often as you like.



Presentations 2Go Databases

Database Server

Select database server and authentication method

Database server that you are installing to:
LV5 Browse...

Database server is on remote machine

Connect using:

Windows authentication credentials of current user

Server authentication using the Login ID and password below

Login ID: p2gsq1

Password: ●●●●●●

InstallShield

< Back Next > Cancel

Presentations 2Go Databases

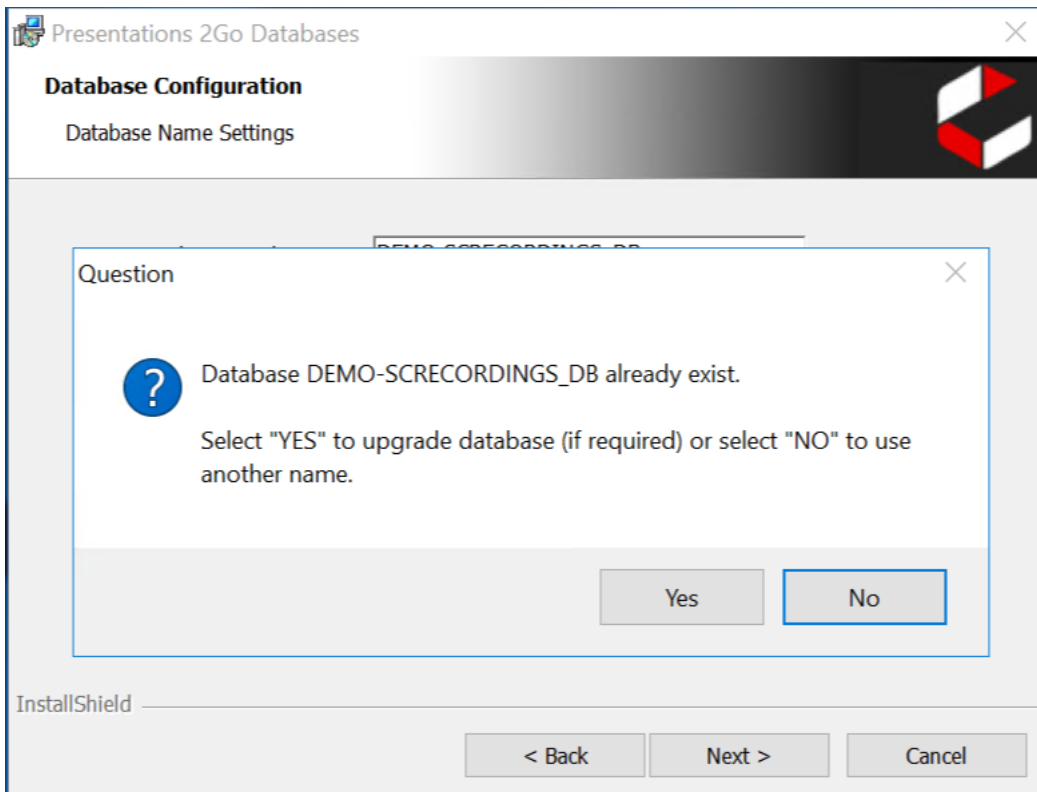
Database Configuration

Database Name Settings

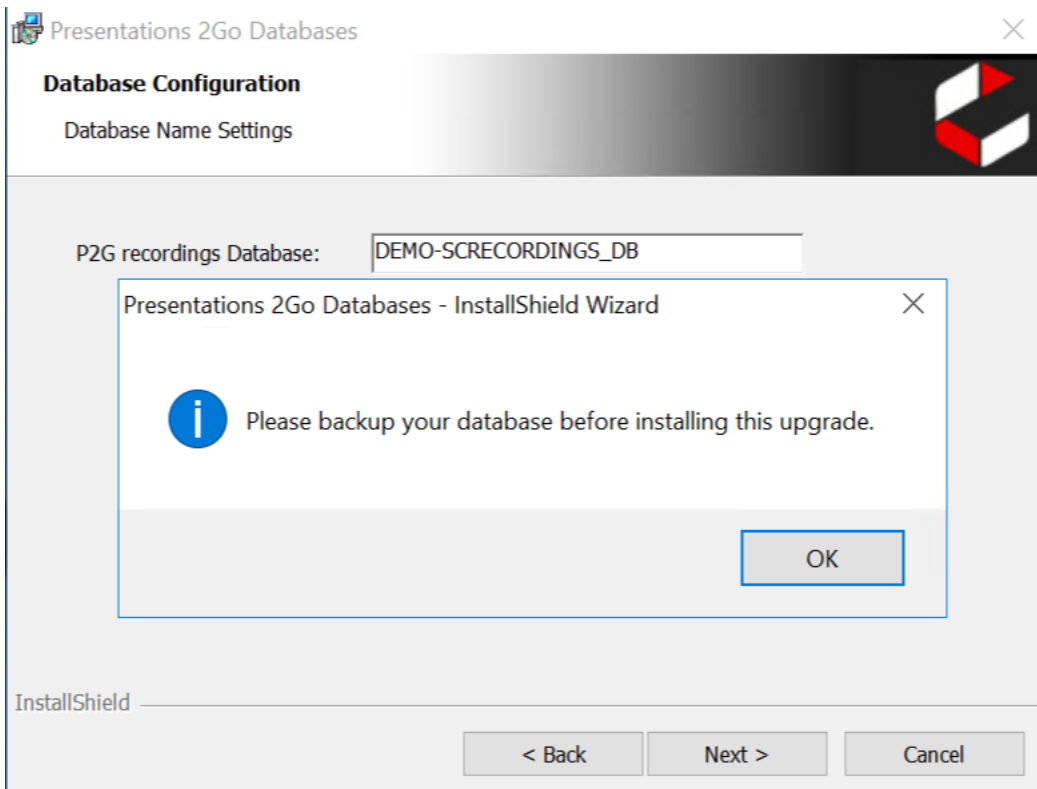
P2G recordings Database: RECORDINGS_DB

InstallShield

< Back Next > Cancel



If a previous database is found, you will be notified that the database will be upgraded.



Make sure you have a backup available.

Presentations 2Go Databases ×

Ready to Install the Program

The wizard is ready to begin installation.


Click Install to begin the installation.

If you want to review or change any of your installation settings, click Back. Click Cancel to exit the wizard.

InstallShield

< Back Install Cancel

Presentations 2Go Databases ×

 **Presentations2Go**

InstallShield Wizard Completed

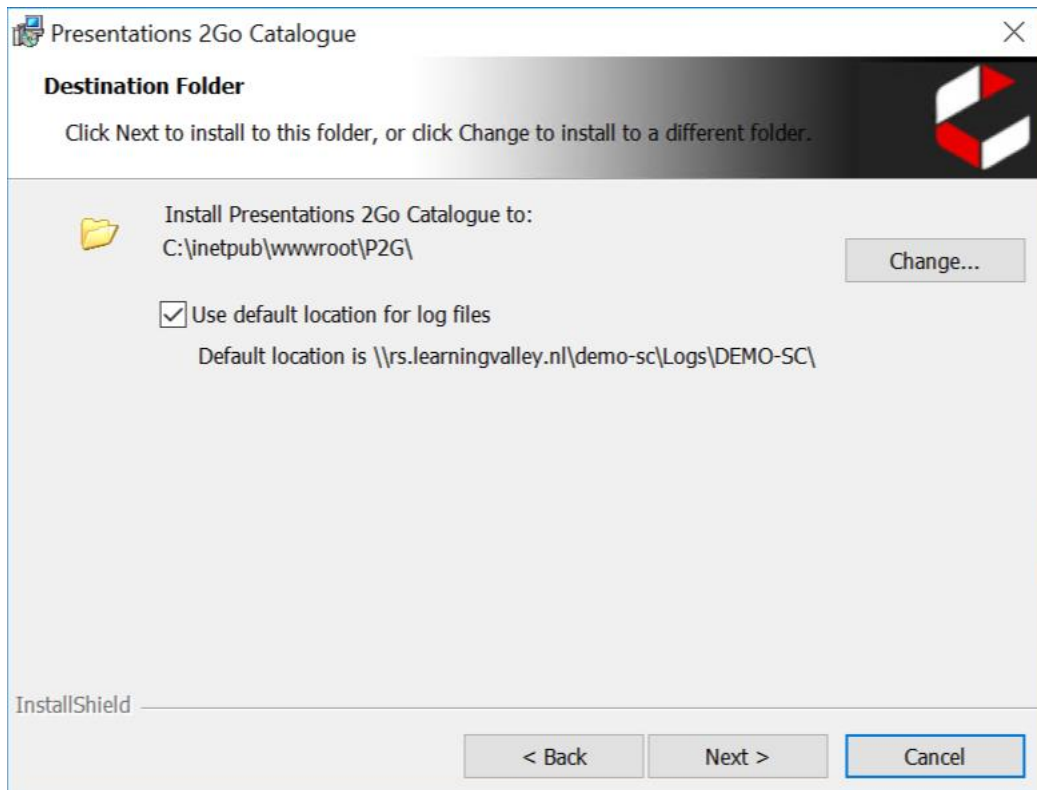
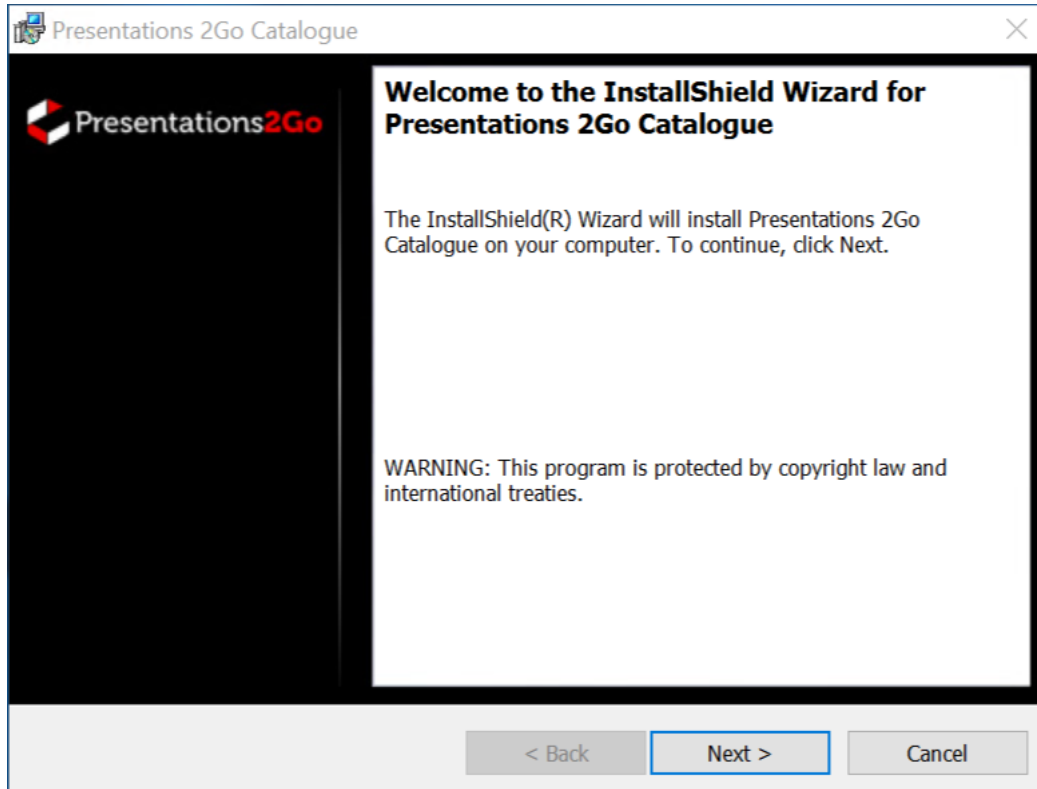
The InstallShield Wizard has successfully installed Presentations 2Go Databases. Click Finish to exit the wizard.

Show the Windows Installer log

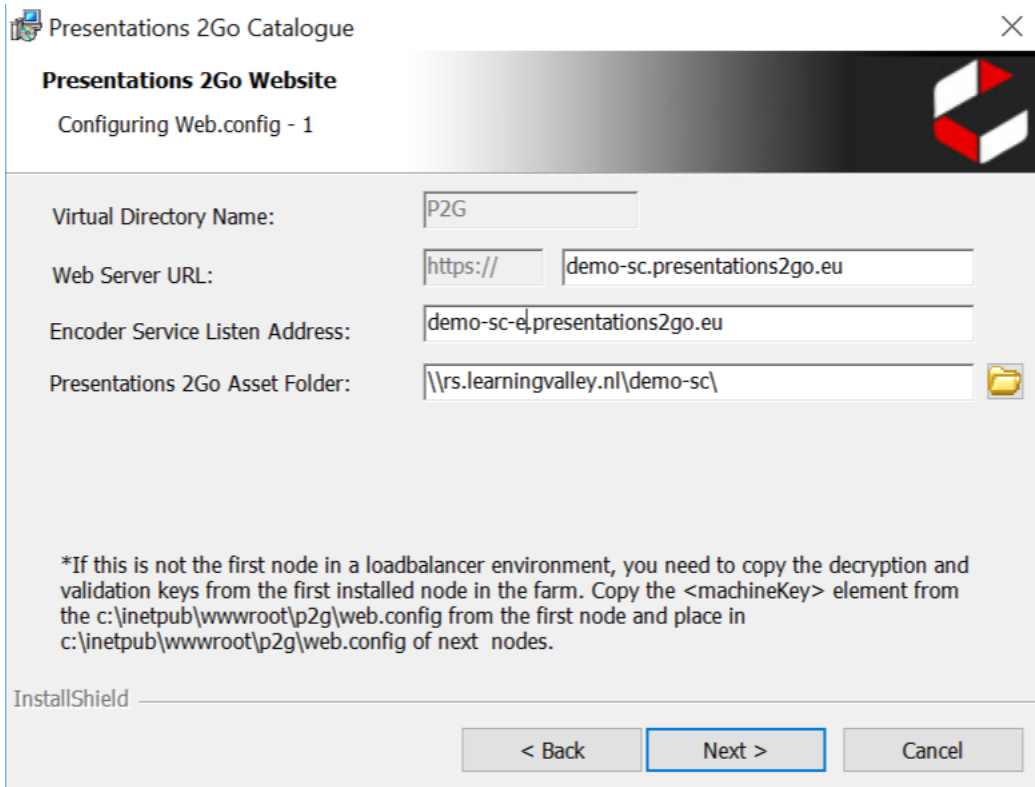
< Back Finish Cancel

3.5 Catalogue

The next installation step is the Catalogue.



The default installation folder and the location of the log files has been prepopulated. The log files will be stored on the share in case shared storage is used.




Presentations 2Go Website
Configuring Web.config - 1

Virtual Directory Name:

Web Server URL:

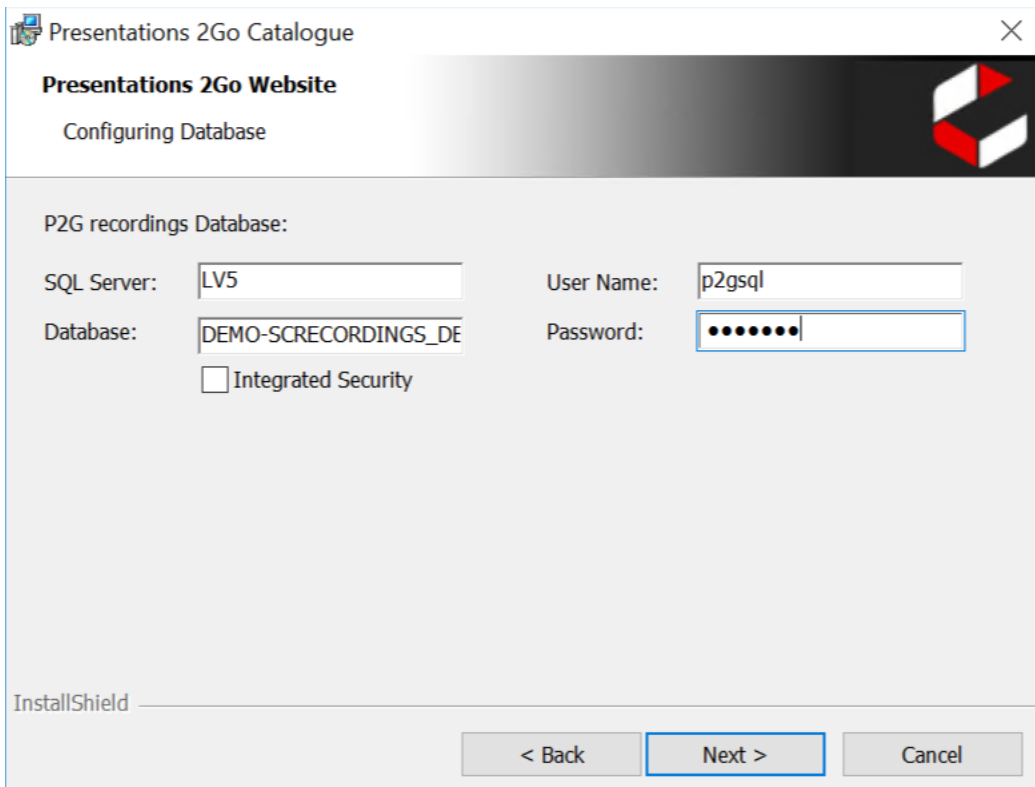
Encoder Service Listen Address:

Presentations 2Go Asset Folder: 

*If this is not the first node in a loadbalancer environment, you need to copy the decryption and validation keys from the first installed node in the farm. Copy the <machineKey> element from the c:\inetpub\wwwroot\p2g\web.config from the first node and place in c:\inetpub\wwwroot\p2g\web.config of next nodes.

InstallShield _____

Supply the DNS names for the IIS website and for the Encoderservice protocol.



Presentations 2Go Website
Configuring Database

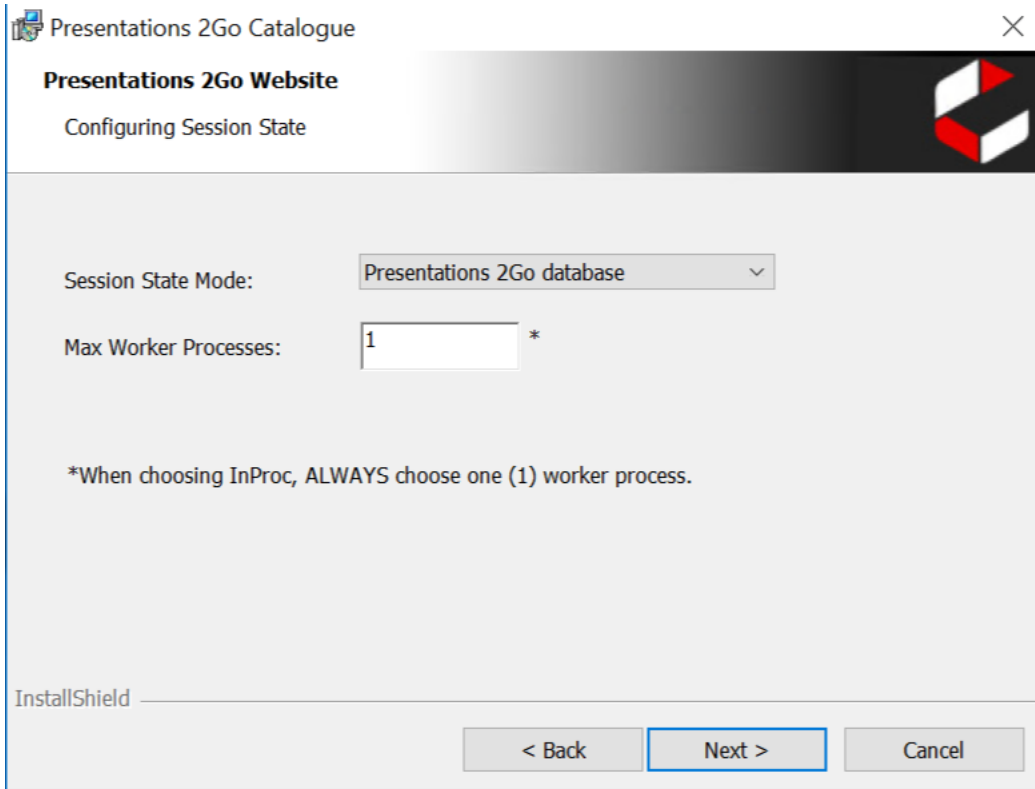
P2G recordings Database:

SQL Server: User Name:

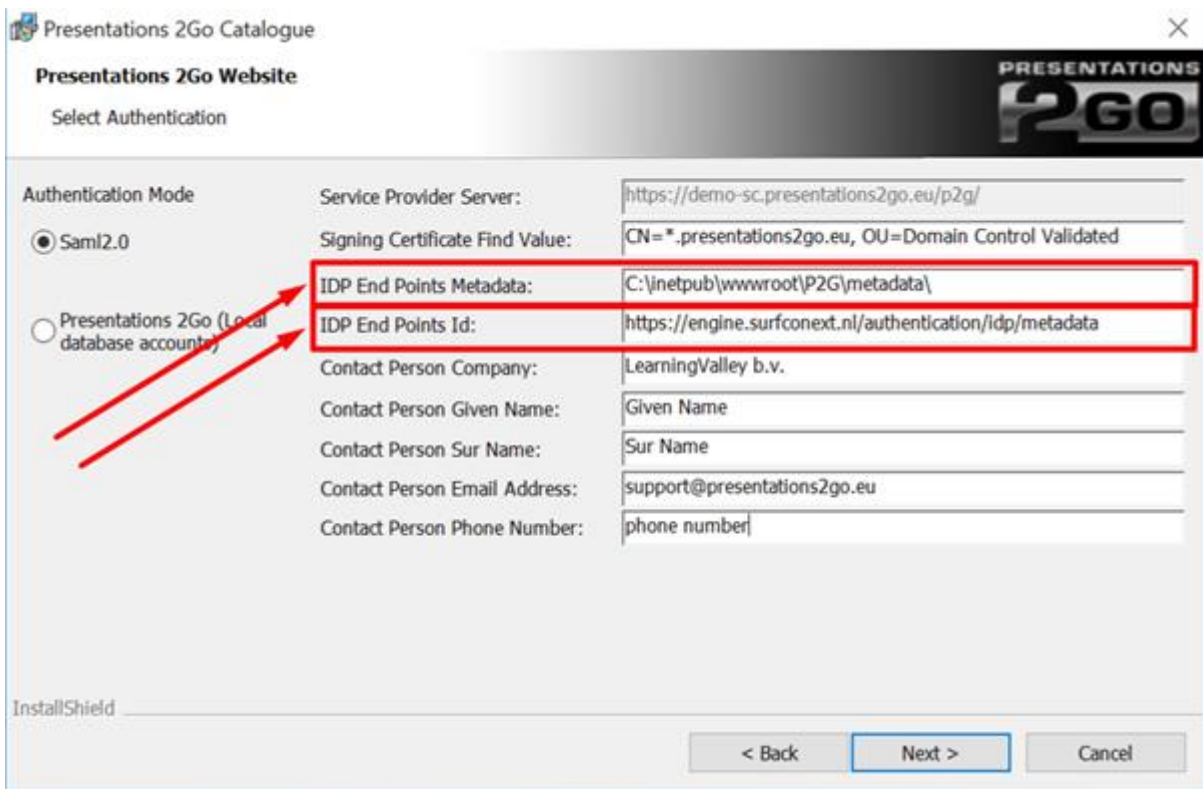
Database: Password:

Integrated Security

InstallShield _____



When a load balanced setup is used (and thus also when shared storage is used, session tokens need to be available to all nodes. So they need to be in a shared location. The Presentations2Go Database is enabled to store these sessions. Under normal conditions it is not needed to use more than one worker process.



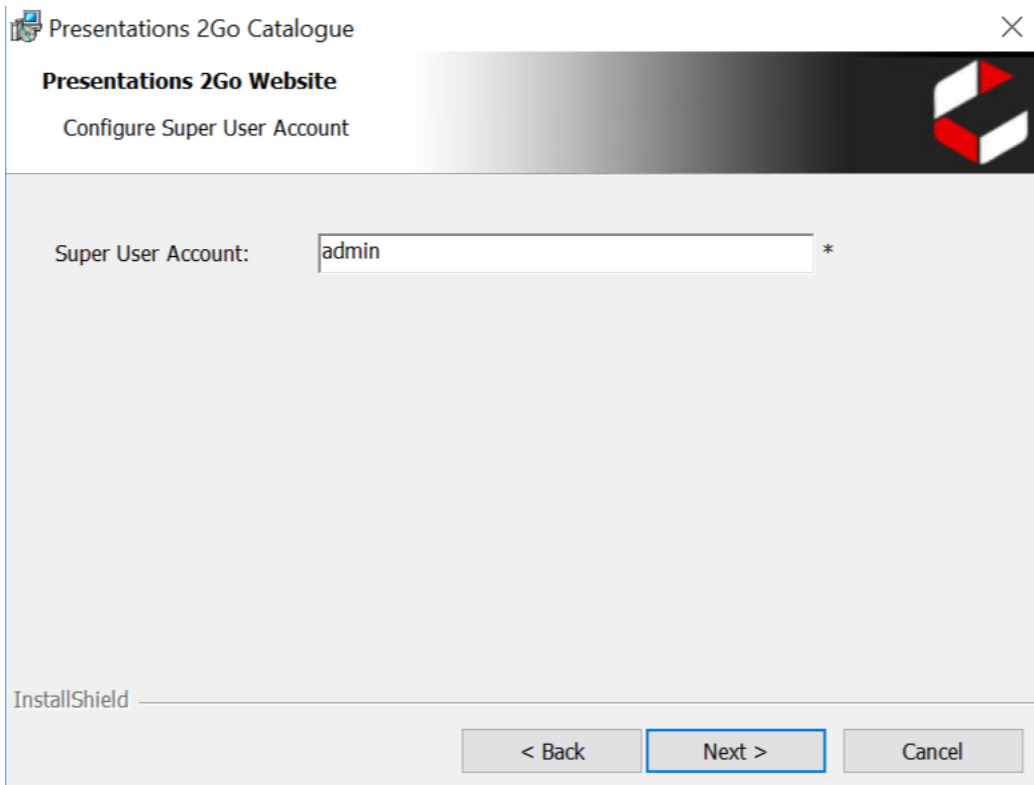
Depending on the authentication needs, SAML2 or local (database) accounts can be used.

When using SAML2, you need to define the find value (is the subject) of the SSL certificate. Beware that if you grab this info from the certificate, it can be UTF8 encoded. You will need to convert this to ASCII/ANSI encoded text before pasting it into the dialog.

The find value needs to be formatted in the following way:

1. A space character after each comma
2. No spaces around the equal sign (=)

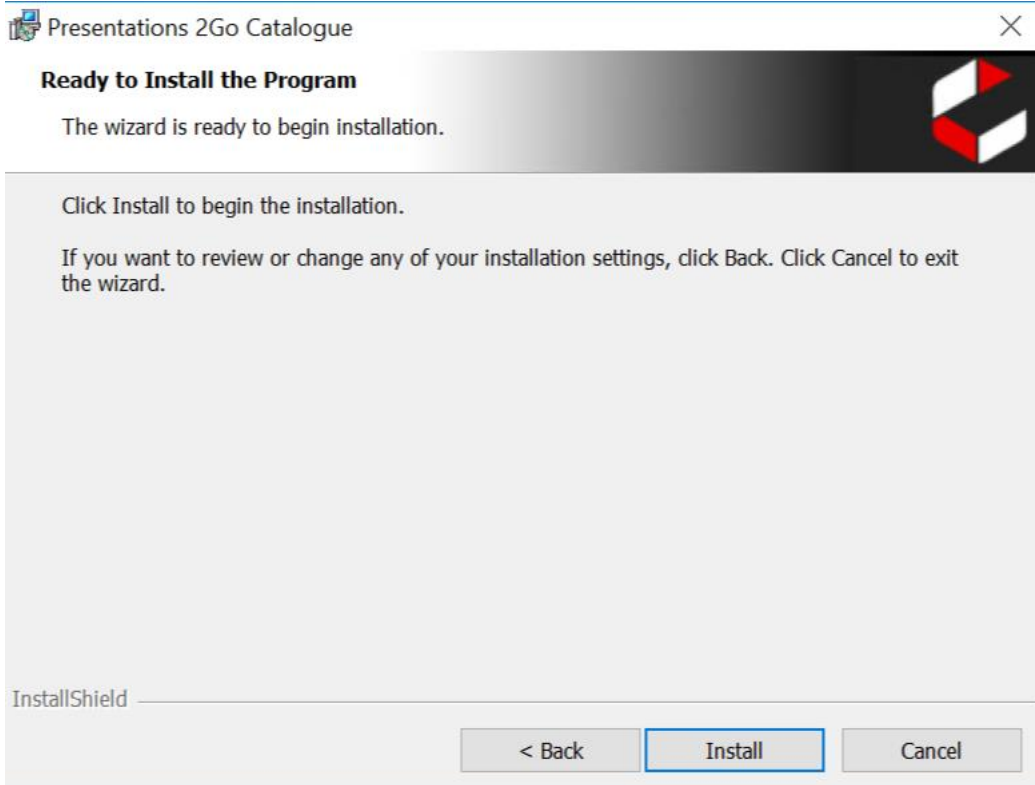
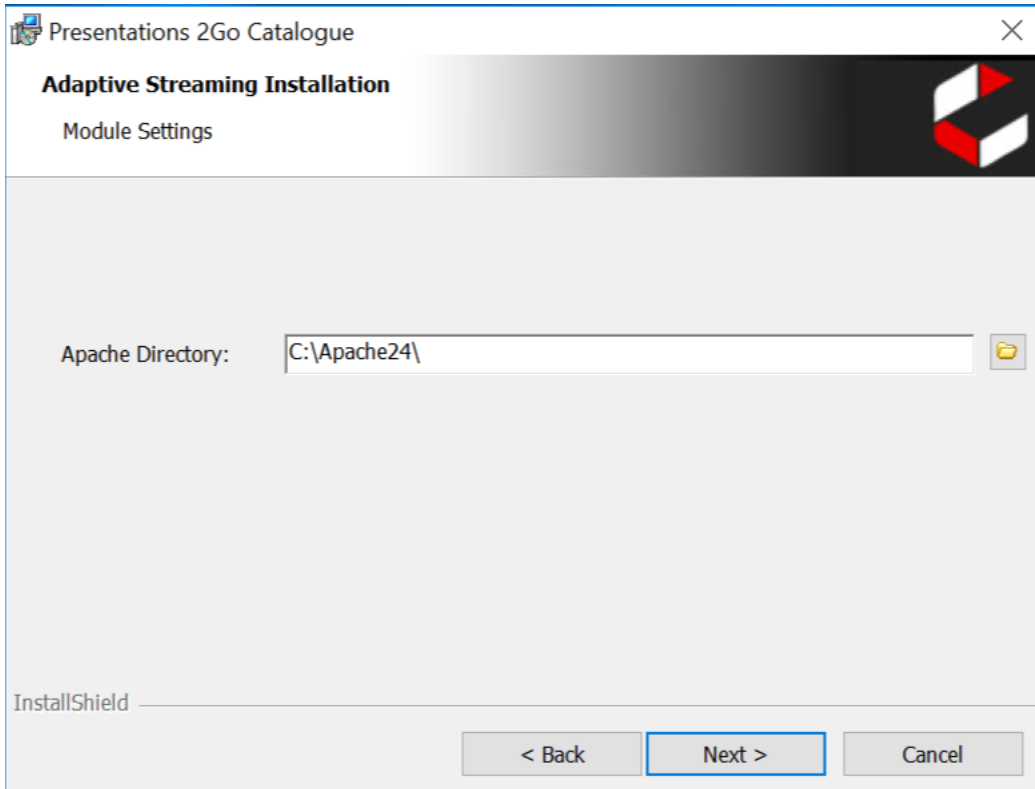
When using another identity provider than Surfconext, you will have to replace the metadata.xml file in c:\inetpub\wwwroot\p2g\metadata with the appropriate one. Surfconext test environment also uses another metadata file so be aware of that when connection to Surfconext test.

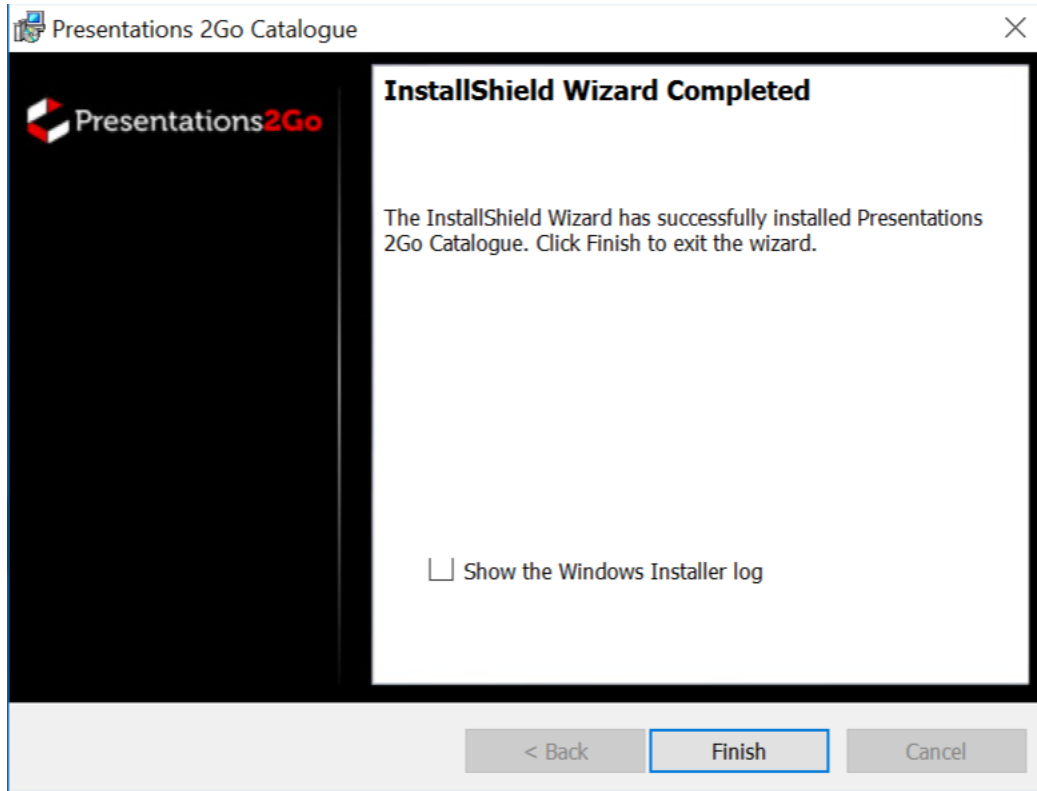


The screenshot shows a Windows-style dialog box titled "Presentations 2Go Catalogue" with a close button (X) in the top right corner. The main title bar reads "Presentations 2Go Website" and the subtitle is "Configure Super User Account". On the right side of the title bar is a logo consisting of three red and white geometric shapes. Below the title bar, there is a text label "Super User Account:" followed by a text input field containing the word "admin" and an asterisk (*) to its right. At the bottom left, the text "InstallShield" is visible. At the bottom right, there are three buttons: "< Back", "Next >" (which is highlighted with a blue border), and "Cancel".

Supply the 'superuser' account. This account will automatically be added to the administrators group of the Presentations2Go sever. When upgrading you could leave this empty since the administrator account is already available.

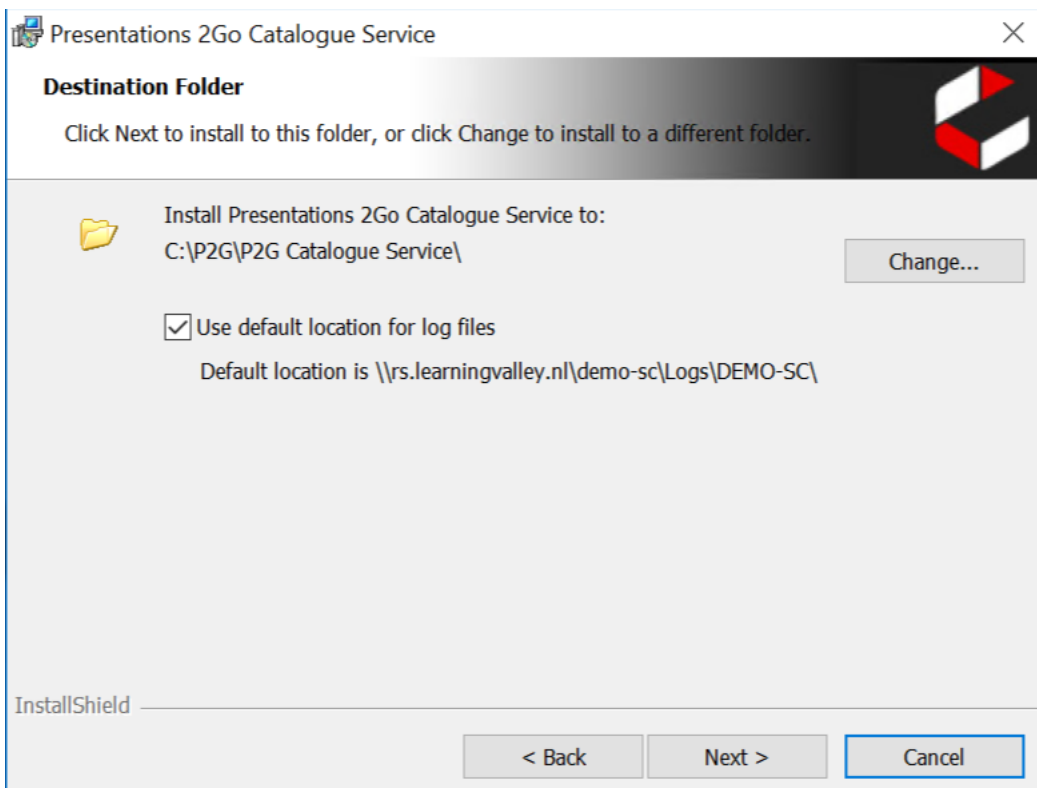
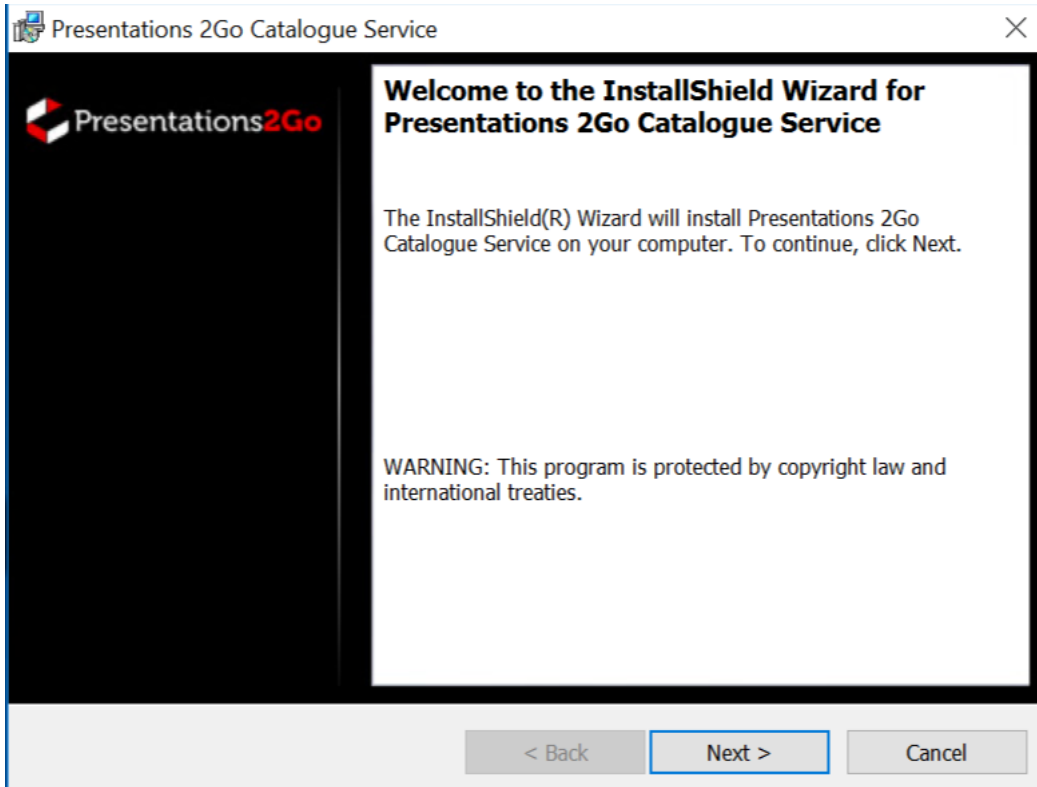
It is advised to remove the superuser account from c:\inetpub\wwwroot\p2g\web.config file, once the account has been added to the administrator group.

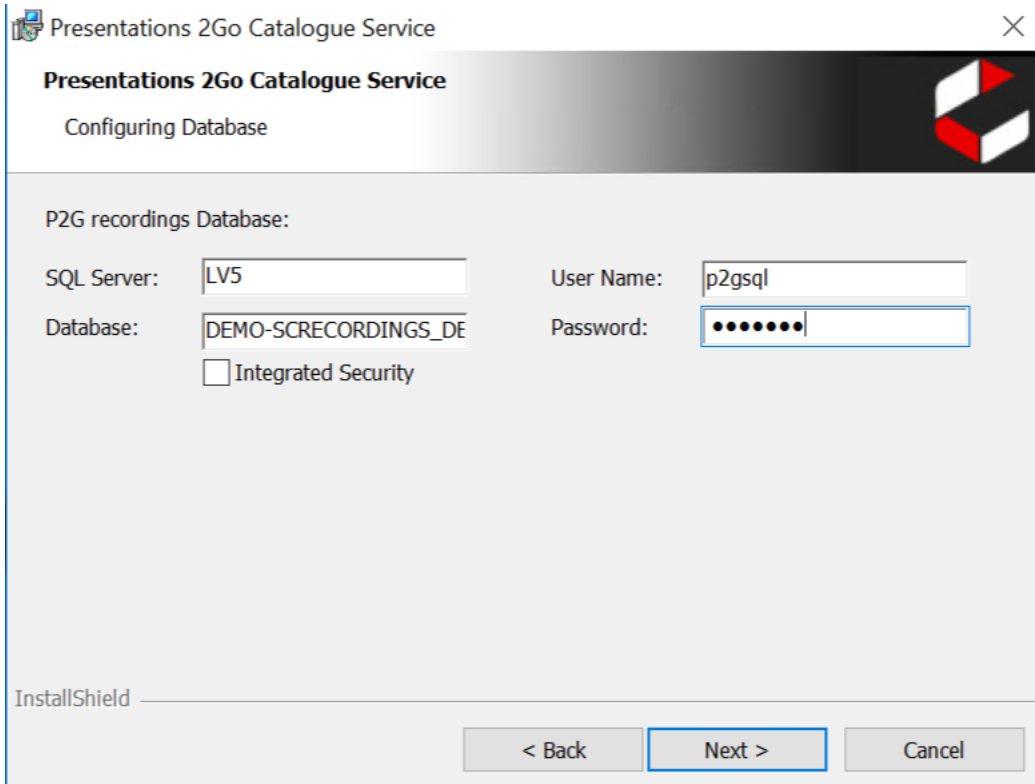




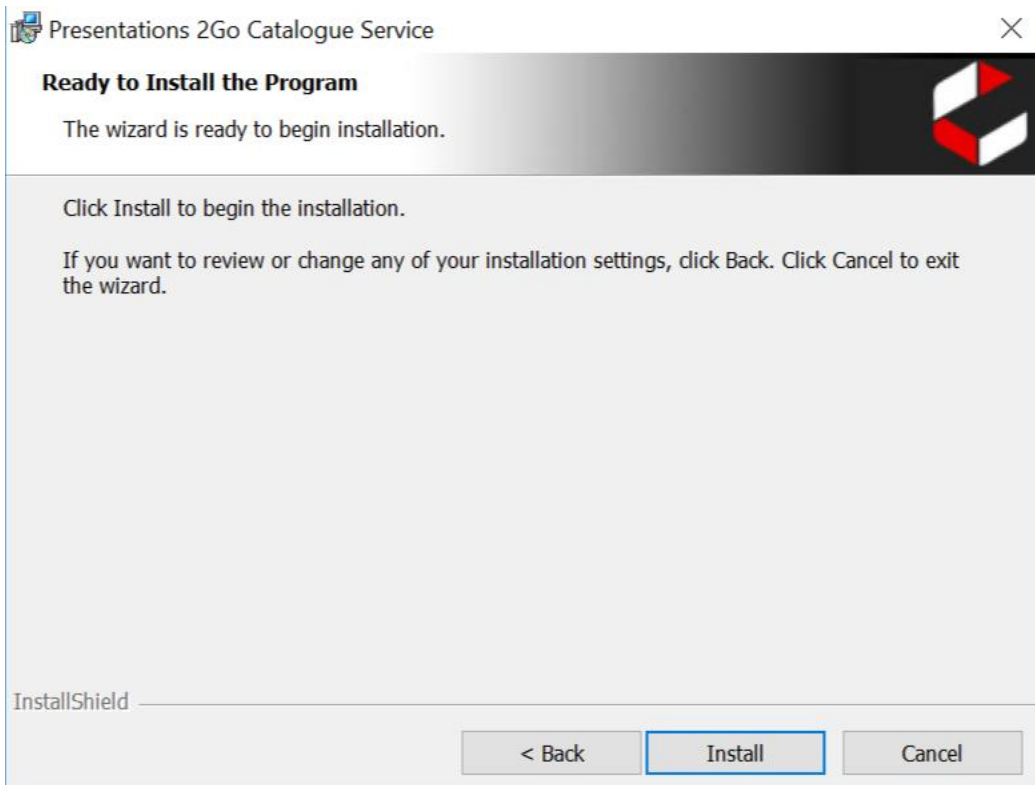
3.6 Catalogue Service

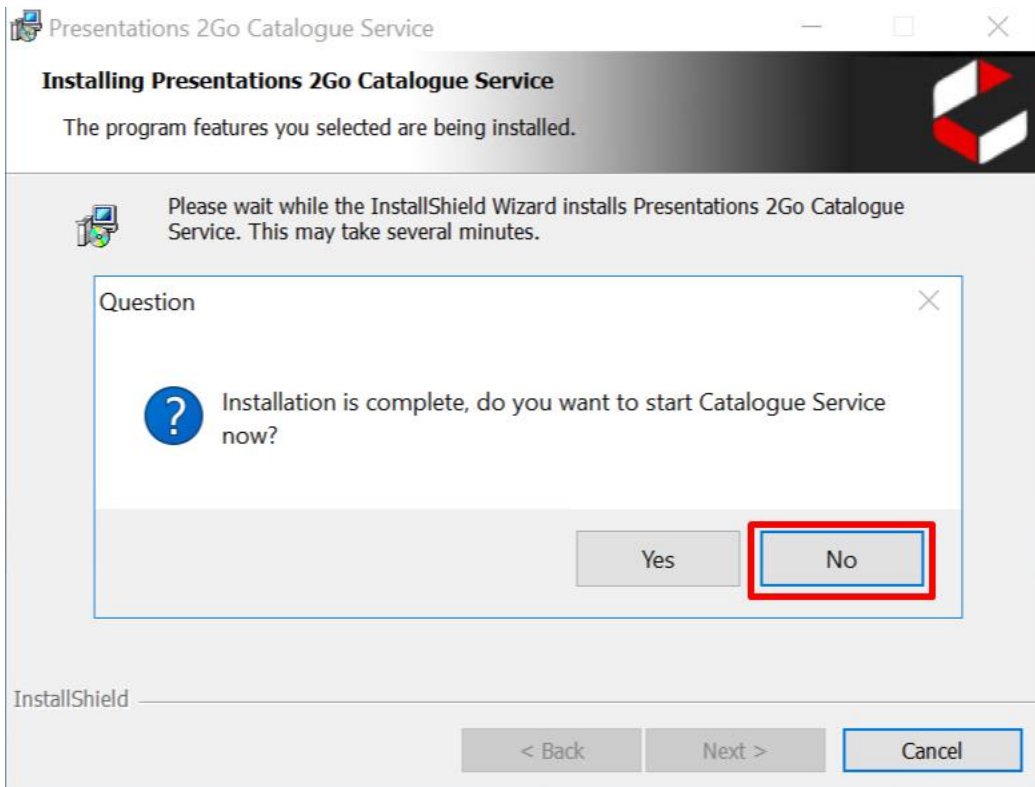
Next is the installation of the Catalogueservice. In total 5 P2G Services will be installed.



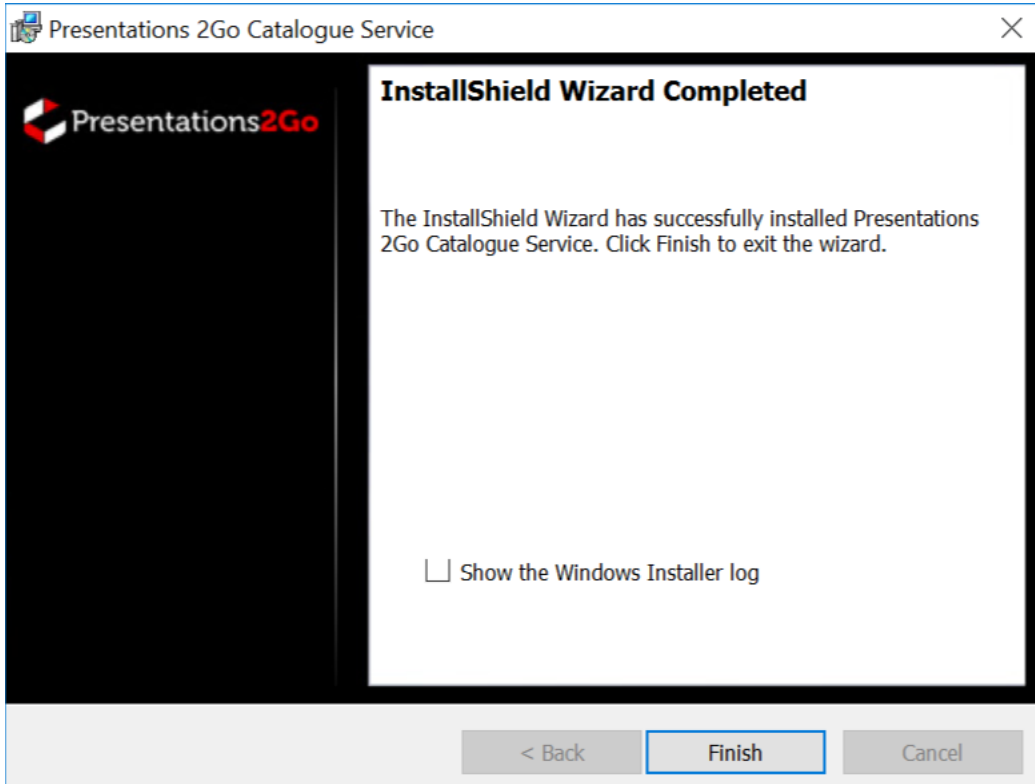


Supply the credentials to access the database.



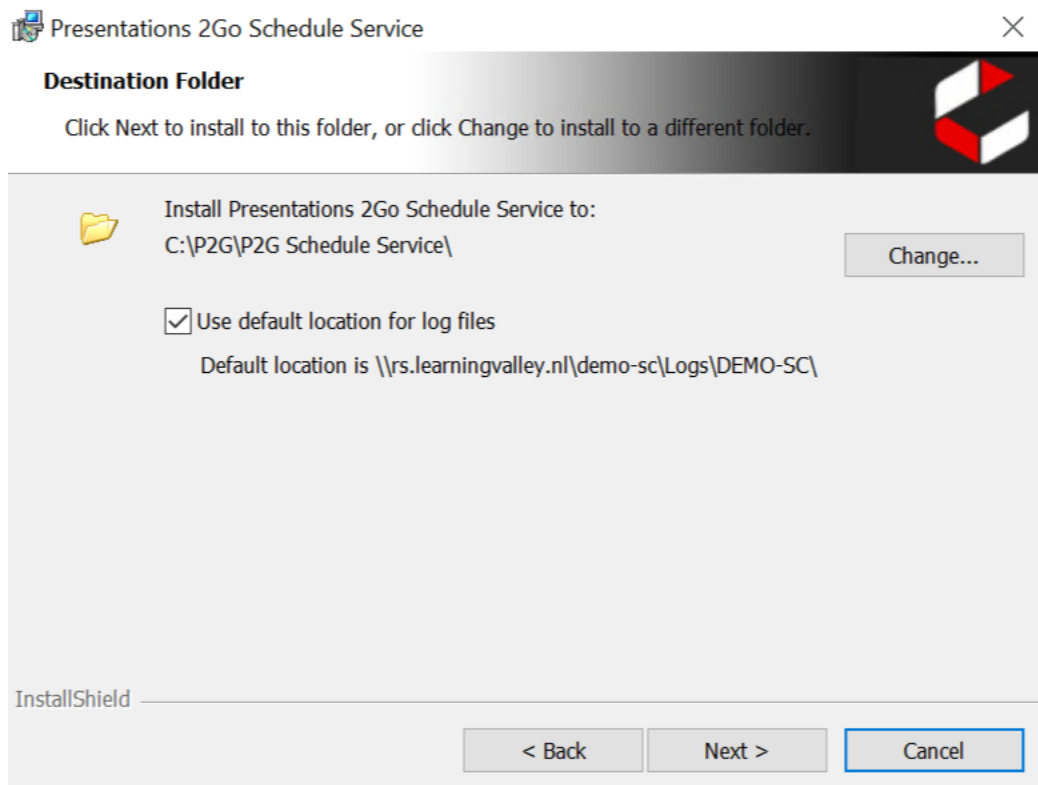
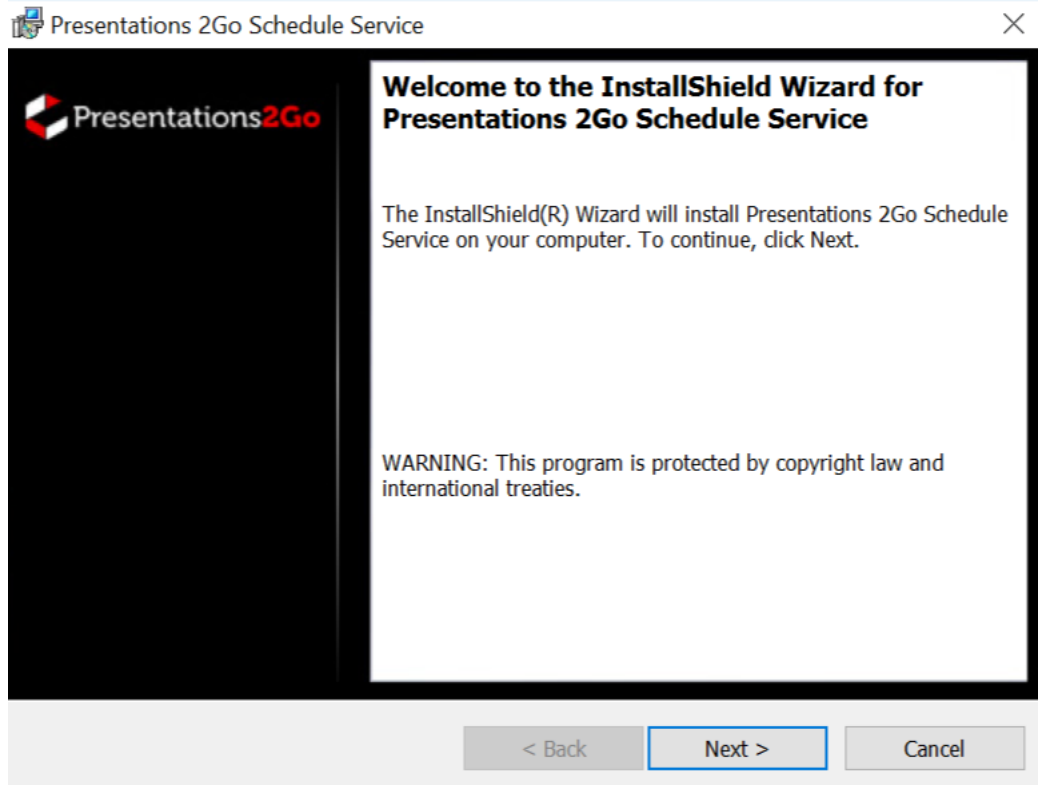


Do not yet start the service. This will be done automatically once the server is rebooted.



3.7 Schedule Service

Next is the installation of the Schedule service



Presentations 2Go Schedule Service

Presentations 2Go Schedule Service
Configuring Application Config

P2G Recordings Database:

SQL Server: User Name:

Database: Password:

Integrated Security

InstallShield

< Back Next > Cancel

Presentations 2Go Schedule Service

Ready to Install the Program

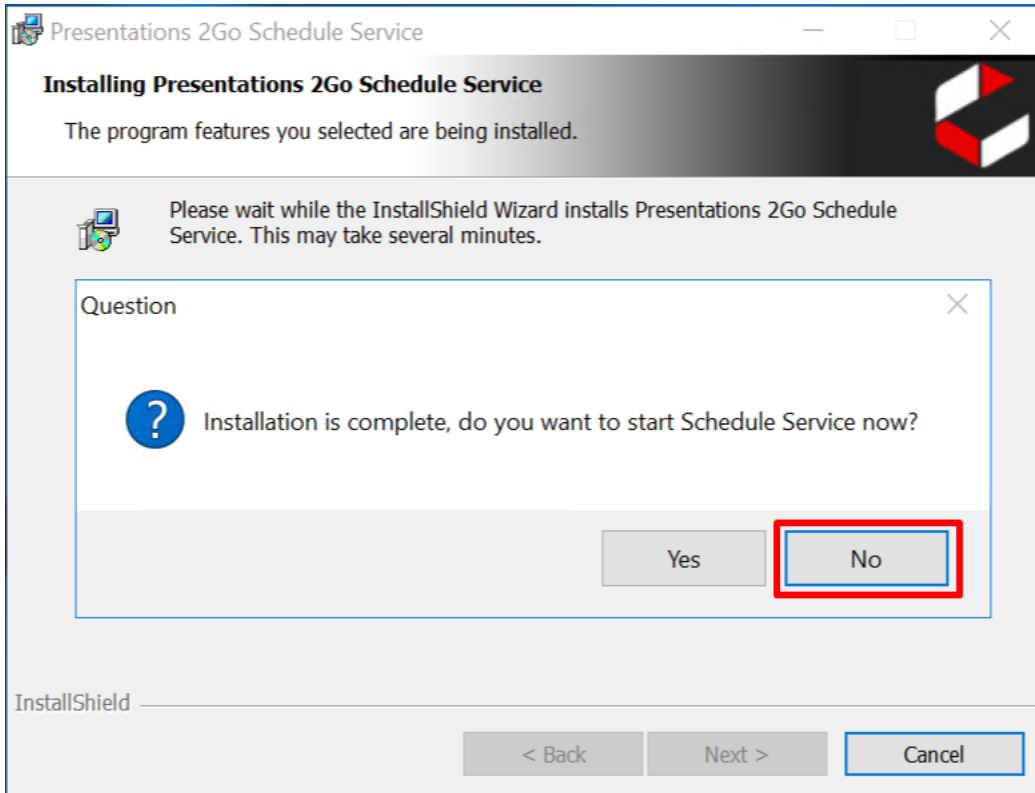
The wizard is ready to begin installation.

Click Install to begin the installation.

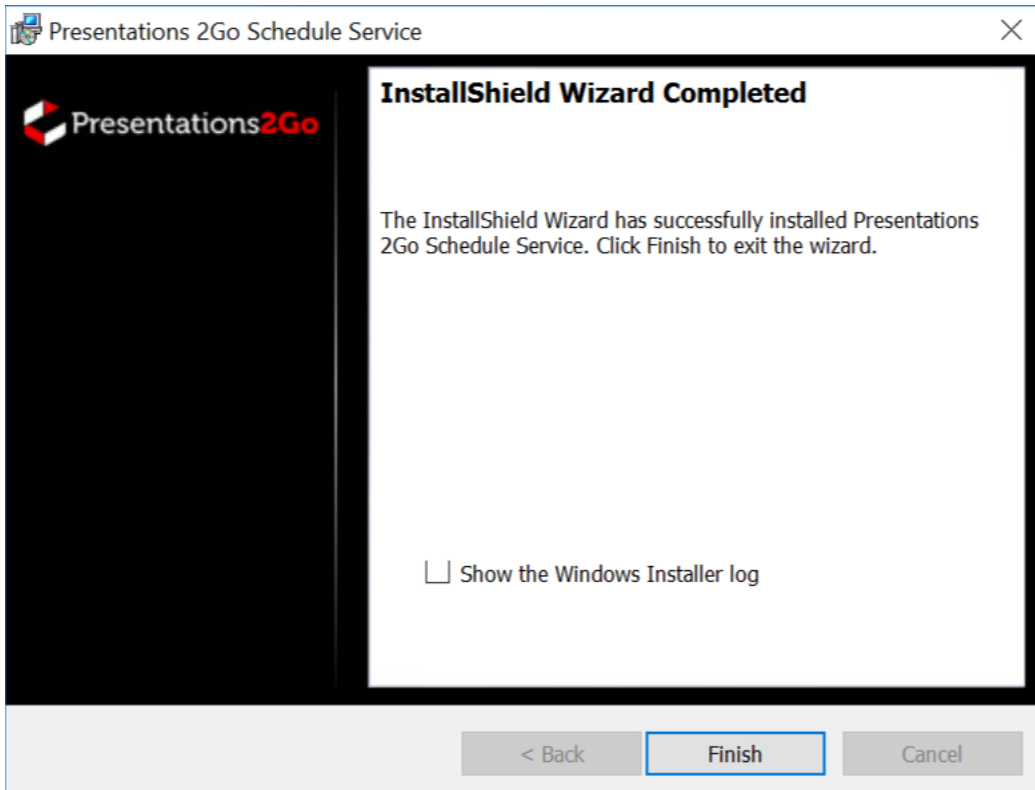
If you want to review or change any of your installation settings, click Back. Click Cancel to exit the wizard.

InstallShield

< Back Install Cancel

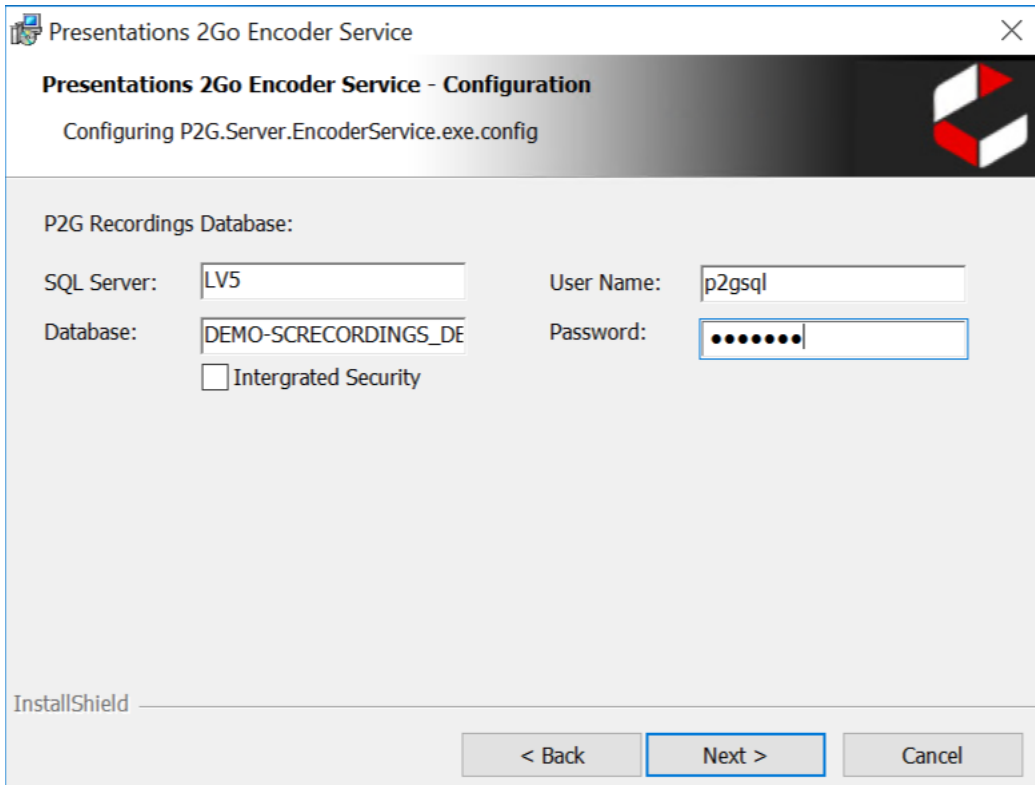
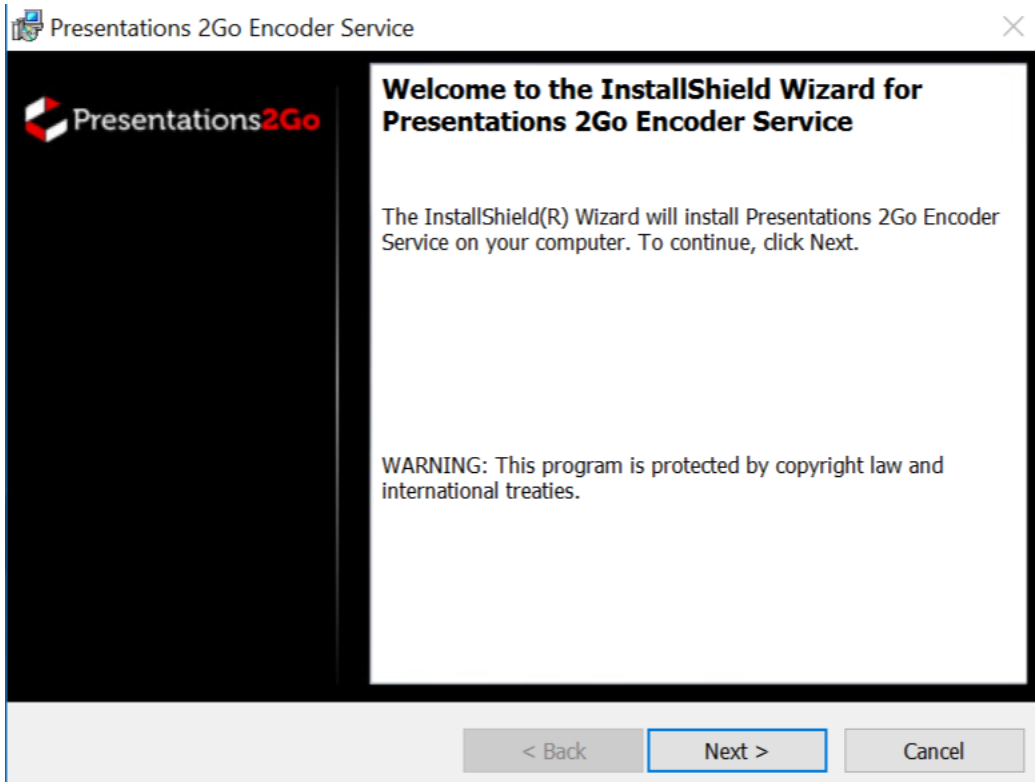


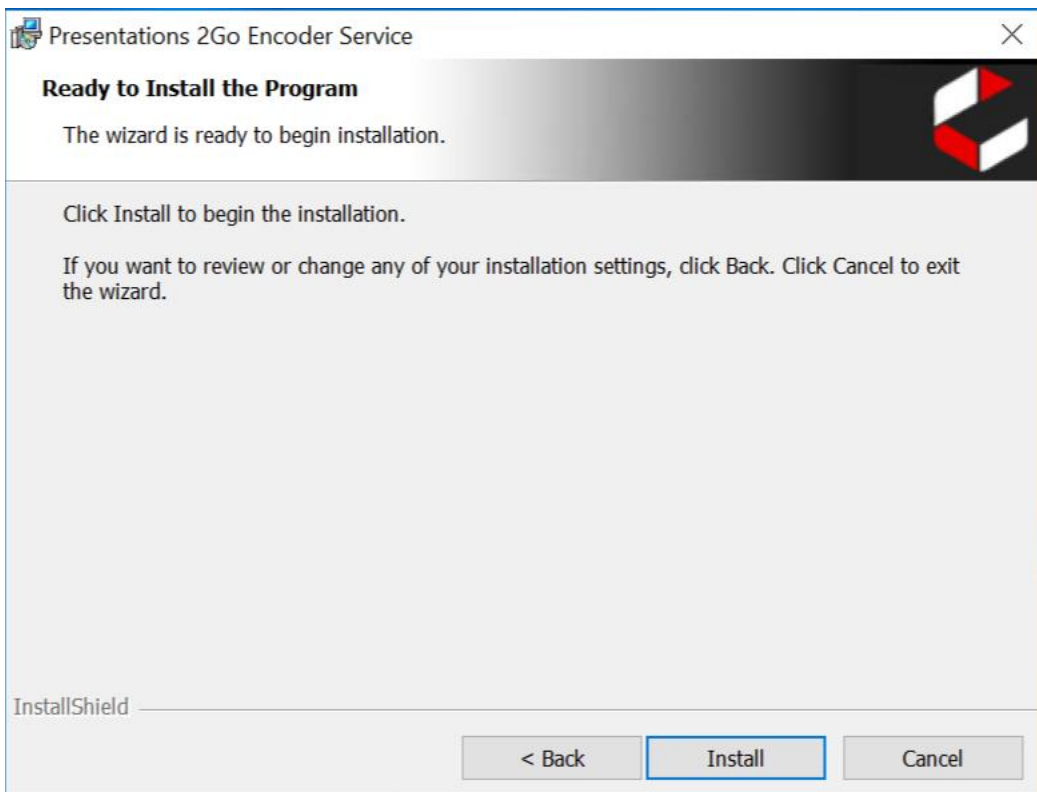
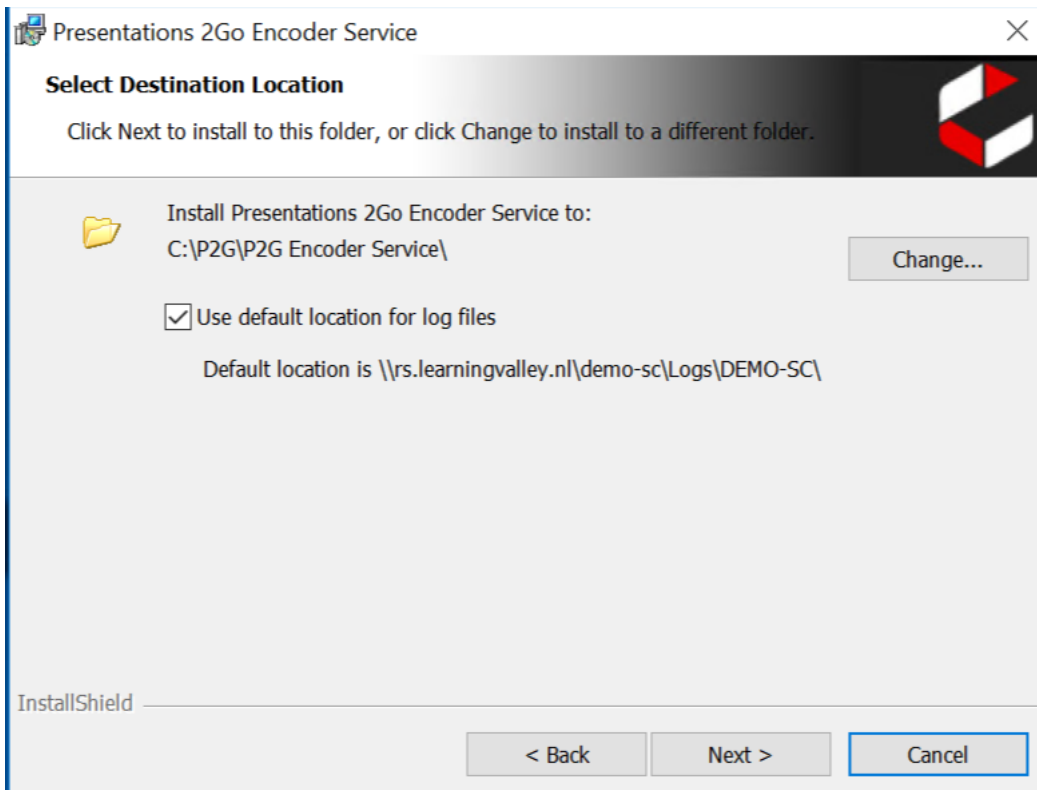
Do not yet start the service. This will be done automatically once the server is rebooted.

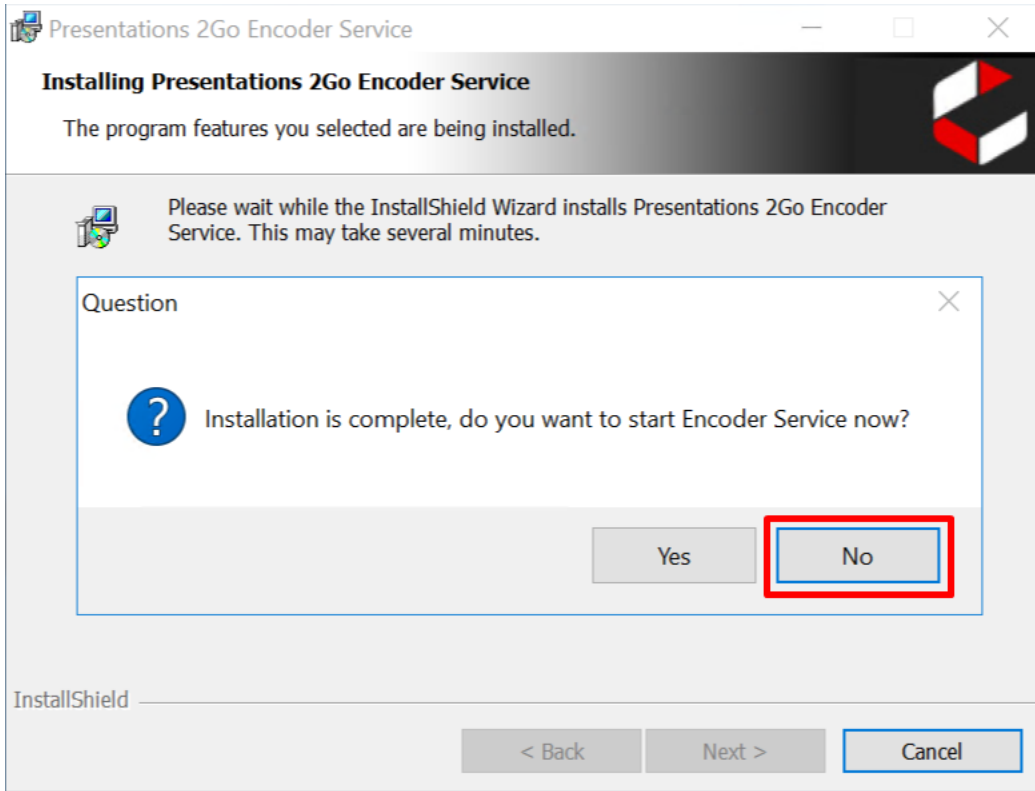


3.8 Encoder Service

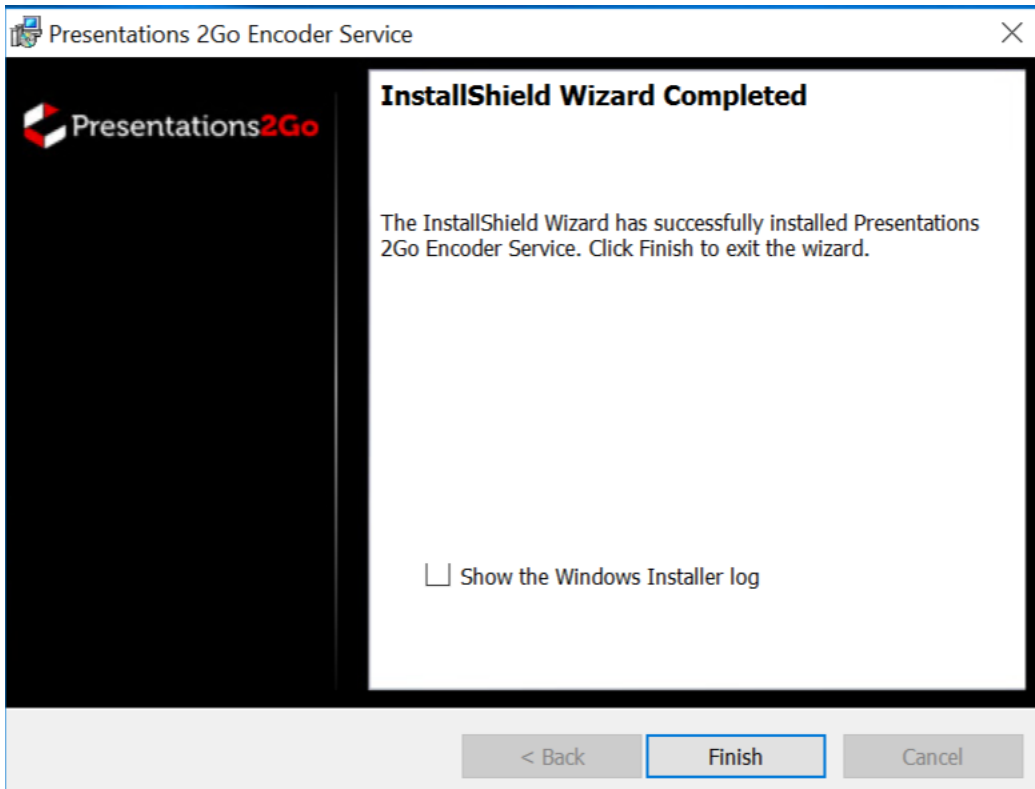
Next is the installation of the EncoderService



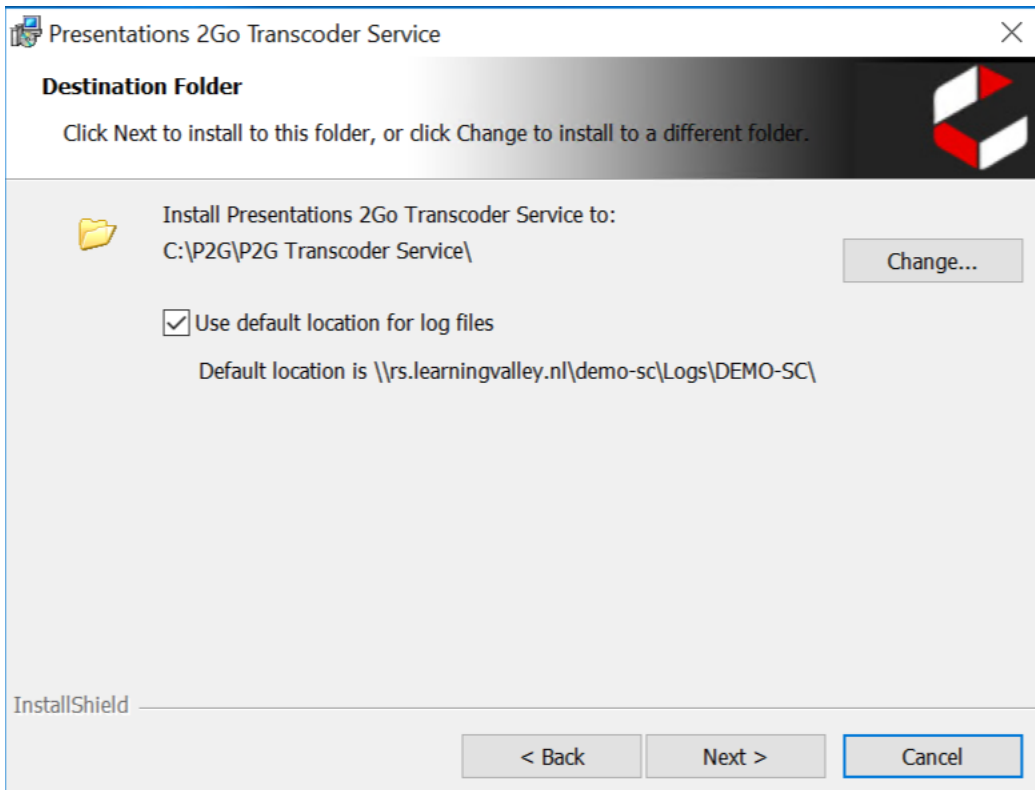
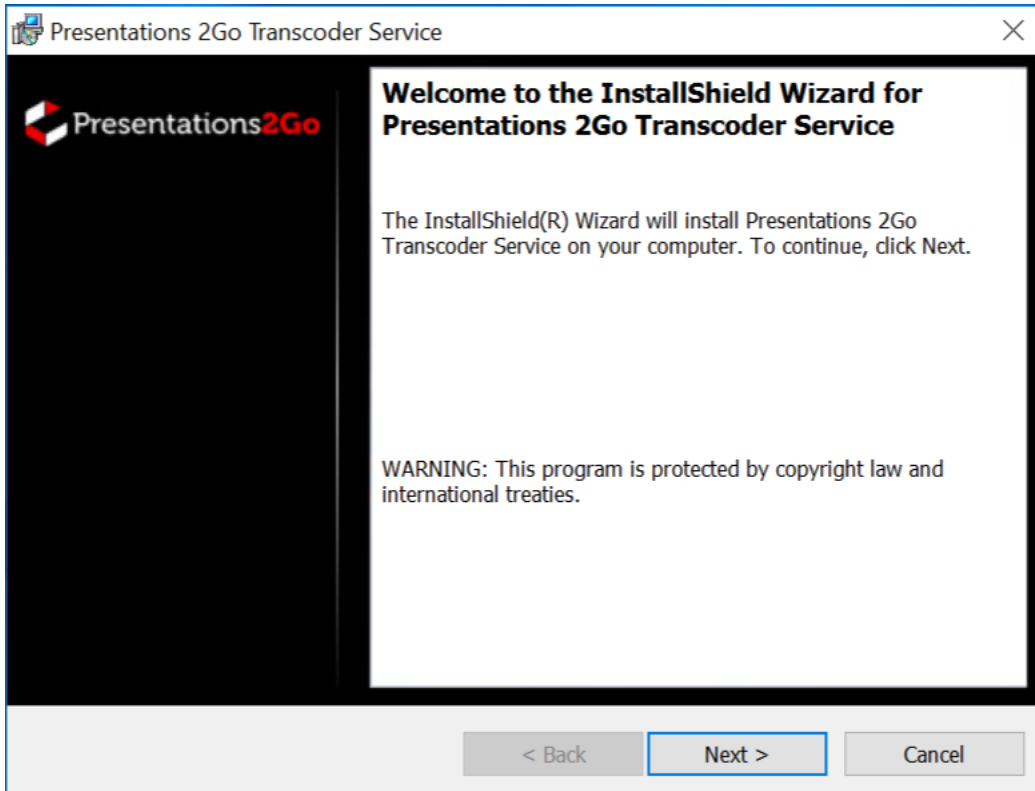




Do not yet start the service. This will be done automatically once the server is rebooted.



3.9 Transcoder Service



Presentations 2Go Transcoder Service

Presentations 2Go Transcoder Service
Video Converter Settings

P2G Recordings Database:

SQL Server: User Name:

Database: Password:

Integrated Security

InstallShield

< Back Next > Cancel

Presentations 2Go Transcoder Service

Ready to Install the Program

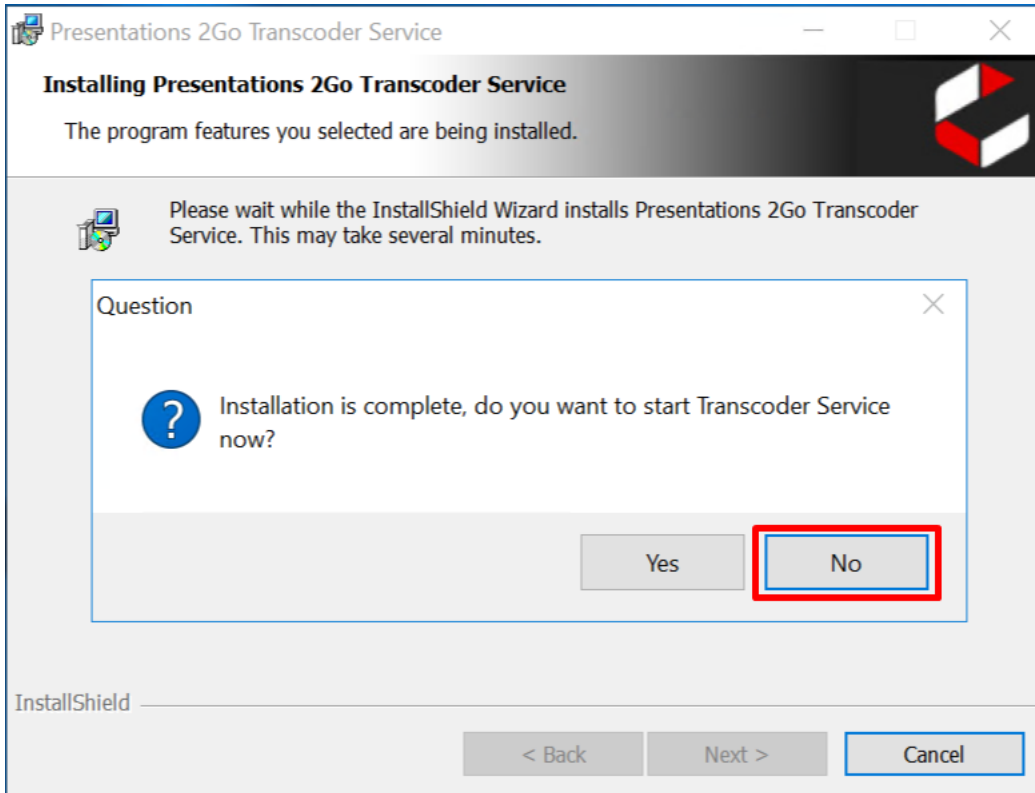
The wizard is ready to begin installation.

Click Install to begin the installation.

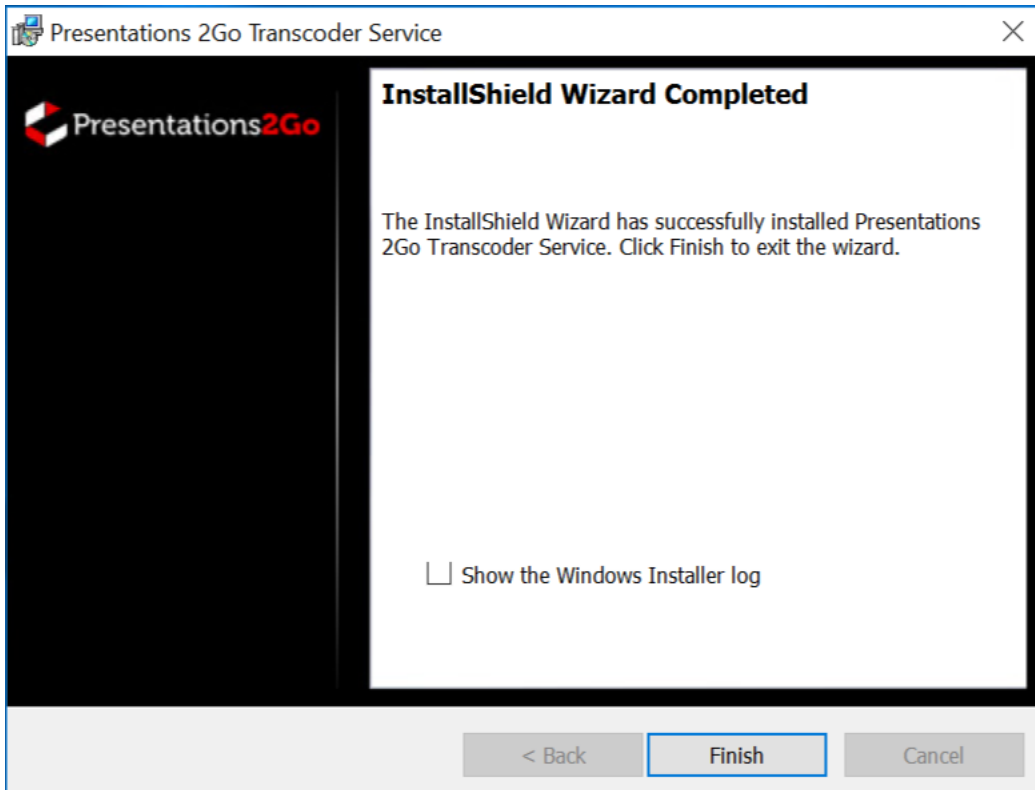
If you want to review or change any of your installation settings, click Back. Click Cancel to exit the wizard.

InstallShield

< Back Install Cancel

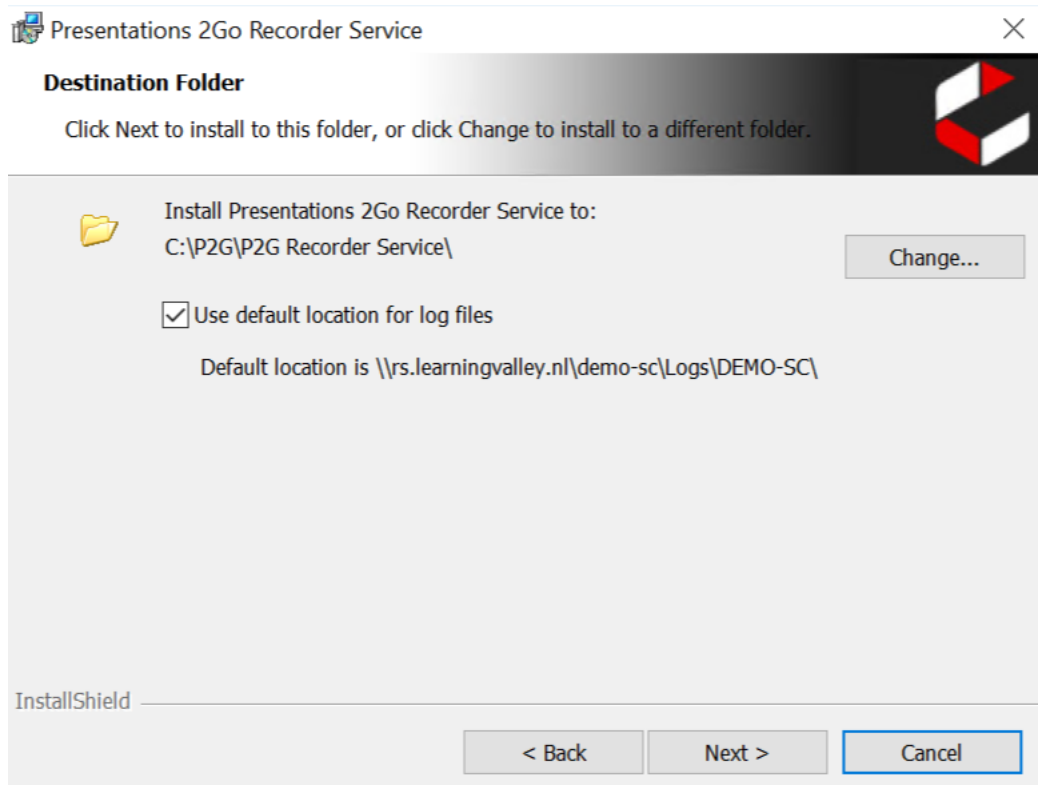
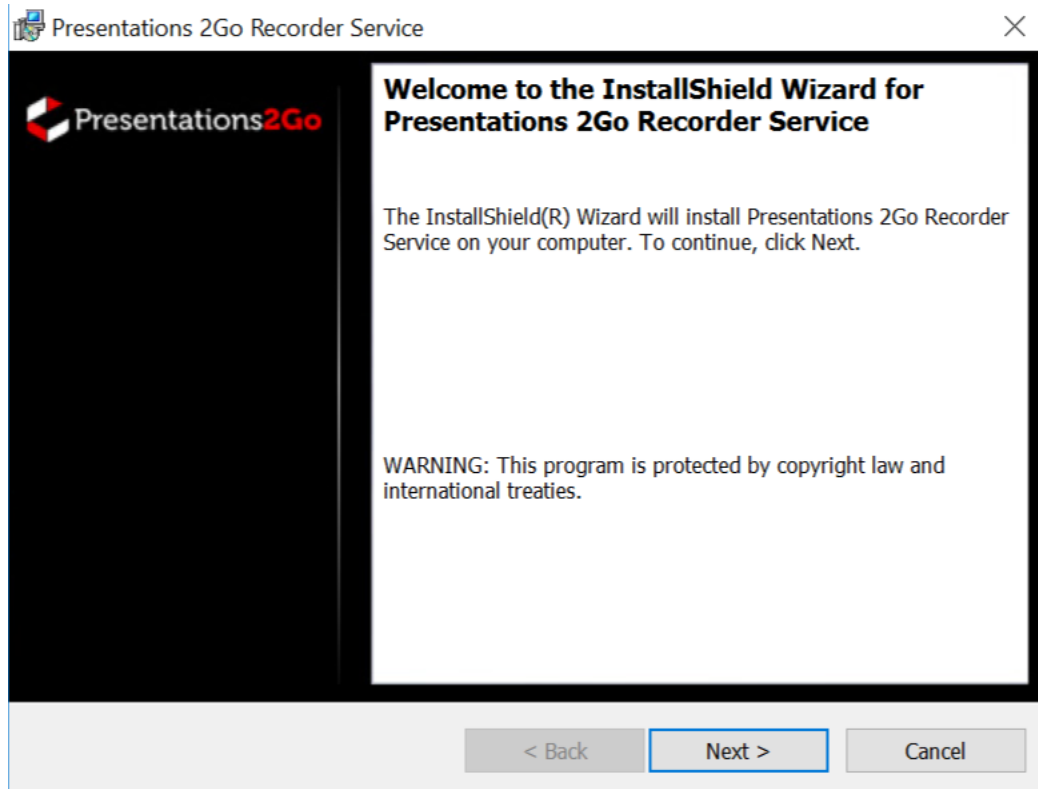


Do not yet start the service. This will be done automatically once the server is rebooted.



3.10 Recorder Service

Next is the installation of the Recorder Service



Presentations 2Go Recorder Service

Presentations 2Go Recorder Service

Configuring Database

P2G recordings Database:

SQL Server: User Name:

Database: Password:

Integrated Security

InstallShield

< Back Next > Cancel

Presentations 2Go Recorder Service

Ready to Install the Program

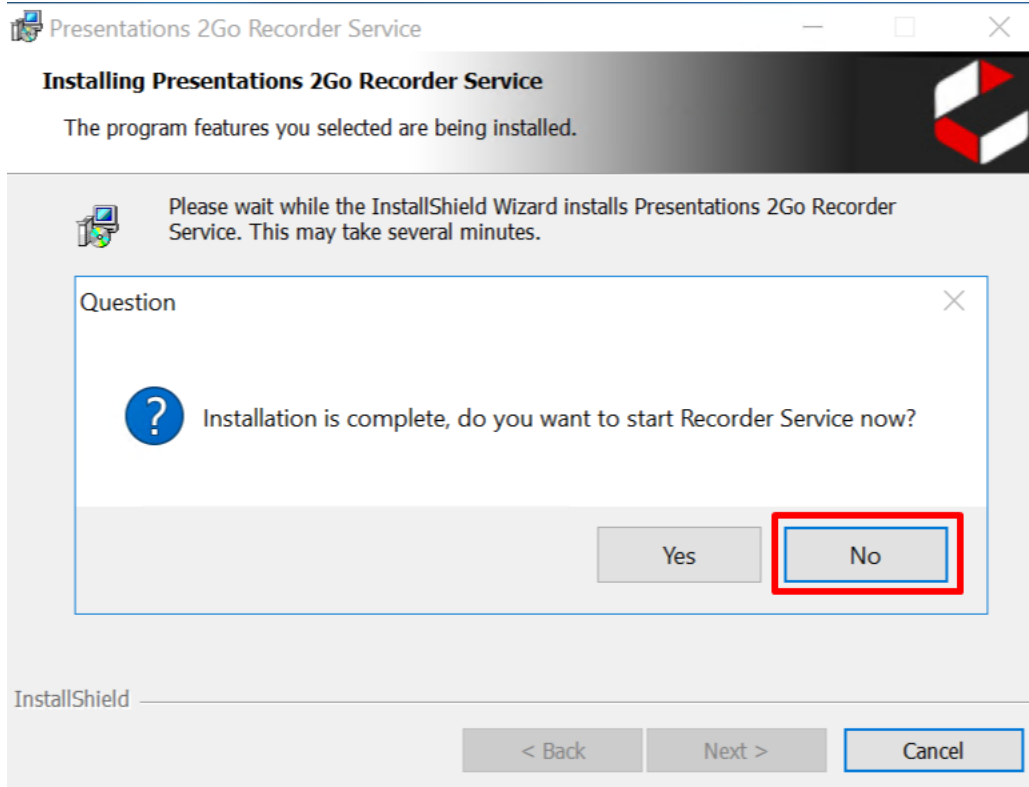
The wizard is ready to begin installation.

Click Install to begin the installation.

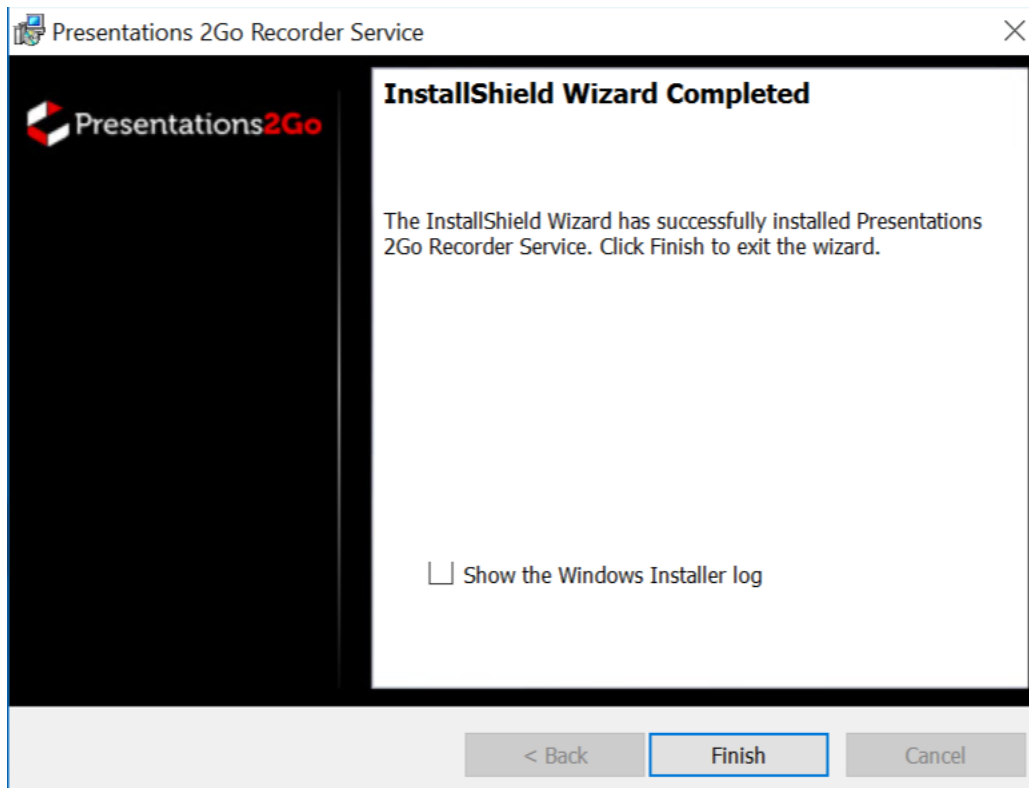
If you want to review or change any of your installation settings, click Back. Click Cancel to exit the wizard.

InstallShield

< Back Install Cancel

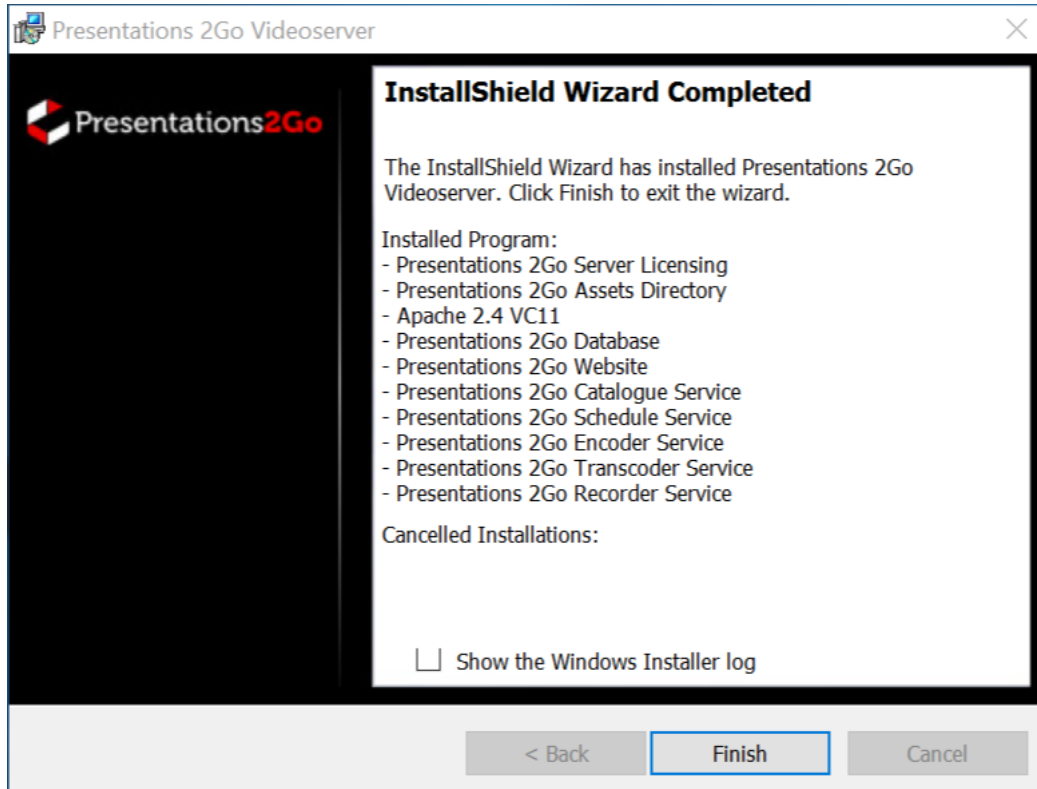


Do not yet start the service. This will be done automatically once the server is rebooted.



3.11 Finalize

And you are done with the installation.



Now reboot the server and once it has restarted try to login into the catalogue by browsing the IIS address.

4 Migration process steps

If this is an upgrade from a previous version of Presentations2Go server a migration process will start. This migration process has 3 phases:

1. Database migration: changing the paths in the database that previously pointed to a drive letter (if you are migrating from direct attached storage to shared storage).
2. Migrating assets
 - a. In v6, the P2GRecord element in recordingdetails.xml has been retired. Existing recordingdetails.xml will be updated and a backup of the original will be created. This process can take a long time but it will be run in the background.
3. Backup RecordingsEventlog
 - a. The recordingseventlog table will be cleaned up based on the setting in General Settings/Tasks. This defaults to 12 months. Older data will be purged to csv files on filesystem in the Logs/Statistics folder
 - b. Similar log files will now automatically be purged after 30 days. You can modify this setting in General Settings/Tasks

During migration, admins logging into the catalogue, will see a orange bar on the top of the browser screen notifying about the progress.

5 Manual post installation steps

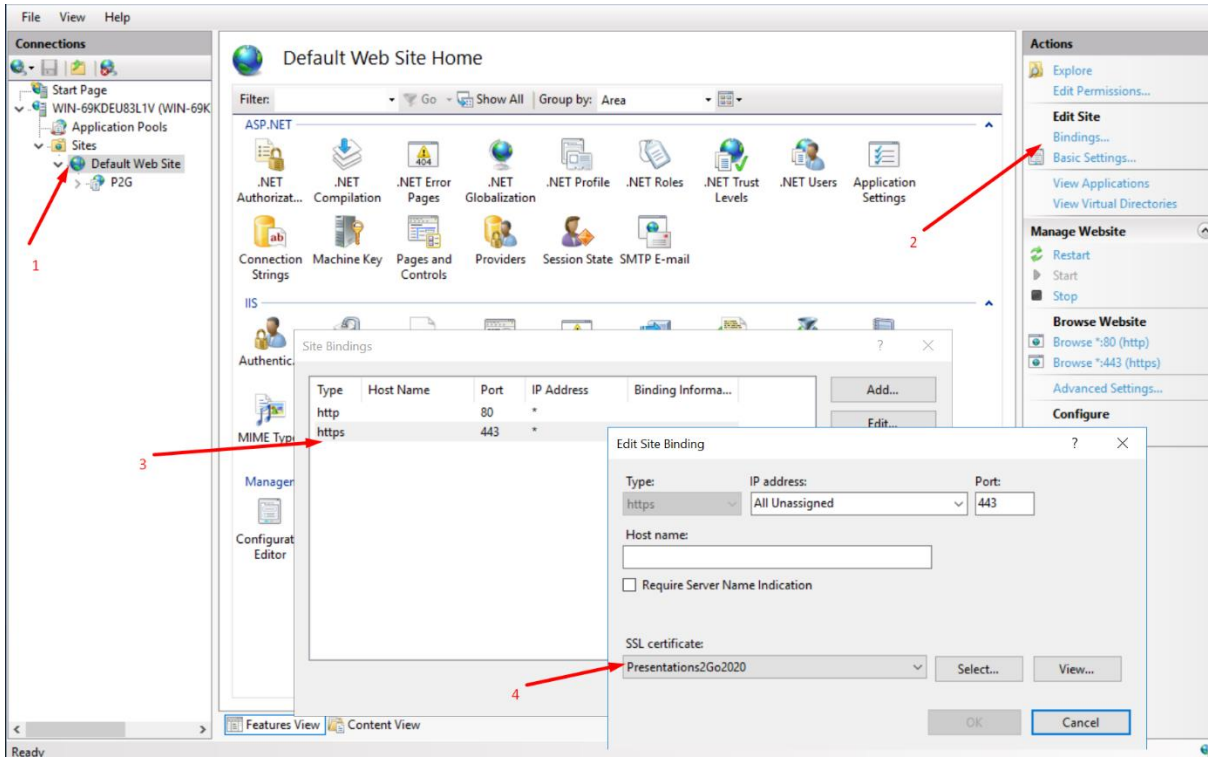
Manual post installation steps to perform are:

1. Install the SSL certificate
2. Set the binding for IIS to bind port 443
3. When using SAML authentication, you will need to grant the Network Service account access to the private key
4. Upload the Apache certificate (General Settings/Settings/ Apache certificate files).
5. Generate and save a **P2G module secret key** in General Settings/ General.
6. After these changes you need to restart Apache to use these new settings.

5.1 Set IIS bindings

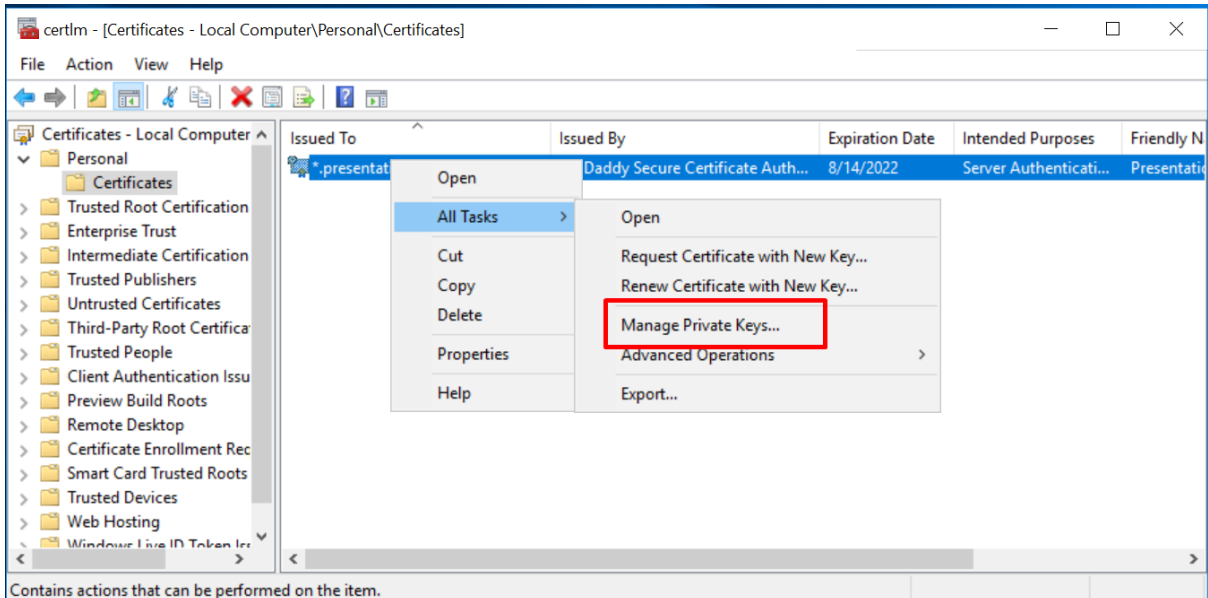
we assume you already imported the certificate

- Start **inetmgr** on the server console.
- Select the default website
- Select Bindings
- Add a binding for port 443
- Select the certificate



5.2 Manage private key access

- Open the certificate manager (Start/Run/certlm.msc):
- Navigate to Personal\Certificates
- Select the appropriate certificate
- Right click and choose All Tasks\Manage private Keys\



- And add Network Service

